



BLACKLINES

*A Monthly Newsletter for Members of the
Treasure Coast Chapter of the Florida Engineering Society*

Volume 21, Issue 4

September, 2006

Political Issues Committee Formed to Promote St. Lucie County As the Next Research and Education Hotspot

This coming general election on November 7th, St. Lucie County residents will be voting on a referendum that will impact the image of the Treasure Coast. The Referendum on Research and Education Benefit Assessment was passed through the State House of Representatives and approved by Governor Jeb Bush as House Bill 1053 in June of 2005. Senator Ken Pruitt, who introduced the bill, envisions St. Lucie County as potentially the next research and education hub, much like the Research Triangle Park in North Carolina. His vision for the area is very much a reality with the arrival of the Scripps Research Institute in Palm Beach County and more recently, the Torrey Pines Institute for Molecular Studies, which is planned for Port St. Lucie.

The referendum proposes the creation of a St. Lucie County Research and Education Authority that would receive funds through a research and educational facilities

benefit assessment on real property. Funds received from this assessment would then be used to promote St. Lucie County as an attractive locale for technology and research related businesses and education, therefore creating high-wage jobs for the Treasure Coast area and providing a sound base for the future economic development of the county.

A Political Issues Committee (PIC) was established by the St. Lucie County Chamber of Commerce to commence an advertising and "Vote Yes" campaign to educate and encourage residents of St. Lucie County.

Other sponsors of the referendum include St. Lucie County and its resident cities, the Economic Development Council of St. Lucie County, Florida Atlantic University, the St. Lucie County School Board, the Treasure Coast Builders Association, the Treasure Coast Realtors Association, and many other organizations.

For the next FES-Treasure Coast Chapter Meeting on September 21st, 2006, St. Lucie County Administrator, Doug Anderson will be present to speak about the referendum and House Bill 1053.

PURPOSES OF HOUSE BILL 1053—REFERENDUM ON RESEARCH AND EDUCATION BENEFIT ASSESSMENT

- Create an independent research and education authority within St. Lucie County to promote and stimulate economic development and employment opportunities within St. Lucie County and throughout the Treasure Coast.
- Provide a dedicated funding source to be utilized by the St. Lucie County Research and Education Authority to fund education and research initiatives in St. Lucie County, including enhancement of existing facilities and programs and development of new facilities and programs to provide a sound basis for economic development and employment in St. Lucie County.
- Provide a funding incentive for public-private partnerships to develop research and education facilities and programs within St. Lucie County and the Treasure Coast.
- Determine that the creation and operation of the St. Lucie County Research and Education Authority is in the public interest.

A Short Word from the FES Treasure Coast President...

If you have been under a rock or out of contact with the civilized world, let me be the bearer of bad news. Steve Irwin, the beloved Crocodile hunter and entertainer to all, is no longer with us. The official cause of death, although not revealed yet, was from a stingray strike to the chest. The man that worked with the deadliest crocodiles, snakes and other deadly animals was taken from us by a stingray?? With every tragedy there must be a something learned. The obvious, do not mess with stingrays, the more serious is *you never know what can happen.*

What does this mean to the Treasure Coast Chapter of FES? The Primary election results are looming, and in many areas we must induct a new slate of freedom representatives. FES will be faced with new ideals by these officials. Although the previous ideas may be a complete overlap, with a fresh face, a sense of urgency to re-educate these popularly elected officials must take place.

FES at the state level, as in the past, will work side-by-side with these holders of the law to establish a new bond. We as members of the Treasure Coast Chapter of FES should assist in educating of these new faces and demonstrate the importance of Engineering in our area. We should also support those who promote the profession and understand its moving parts. I urge you again to support your local candidates and continue to vote. Make sure that FES and the community doesn't get a strike to the chest by the unexpected.

As I have stated before, all of the officers and I have made a pledge to this chapter to continue its high standards. If at any point you as a member feel that we as a board are not achieving the goals presented, please contact me at (863) 763-8999 or marcos-m@lbfh.com

Thank you again for taking the time to read this month's thoughts,

Marcos
President -Treasure Coast Chapter of FES

September Meeting at a Glance...

Who: *St. Lucie County Administrator, Doug Anderson*

What: FES Treasure Coast Chapter, September Meeting:
House Bill 1053—Referendum on Research and Education Benefit Assessment

Where: Finz Waterfront Grille

When: September 21, 2006

Cost: \$35/person

RSVP: Heidi Henderson by September 18th at HHenderson@Creechinc.com or by calling (772) 283-1413.

Mark Your Calendars



September 8-10:

Civil PE Review Course, Part 1
Renaissance Orlando Airport, Orlando, FL

September 19 & 20:

FICE Drainage Standard Indexes Course
FICE WZTC Refresher Course
Hilton Tampa Airport Westshore, Tampa, FL

September 21:

*FES-Treasure Coast Chapter Meeting
Finz Waterfront Grill, Stuart, FL.*

September 26-27:

FICE Bridge Scour Practices Course
Embassy Suites, Ft. Lauderdale, FL

September 29:

FICE/FDOT Financial Manager's Workshop
Hyatt Regency, Tampa, FL

September 29-October 1:

Civil PE Review Course, Part 2
Renaissance Orlando Airport, Orlando, FL

TREASURE COAST CHAPTER COMMITTEE OPPORTUNITIES

We still need volunteers for many State Committees. Below is a list of the committees that are available. For details on a specific committee and an explanation of responsibilities, please see the FES website (<http://www.fleng.org/aboutfes.cfm>). If you are interested in volunteering for any of these committees, please contact Marcos Montes De Oca at 863-763-8999 or marcos-ml@lbfh.com.

Energy Committee

Study and make recommendations to the Commission on Legislative and Government Relations of the Florida Engineering Society with respect to energy matters affecting the public and the profession. Prepare studies and make recommendations to the Commission on energy policies or positions that would be appropriate for the Society to adopt and promote.

Communications Advisory Committee

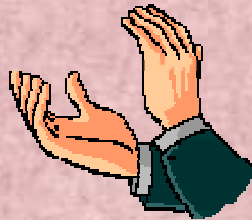
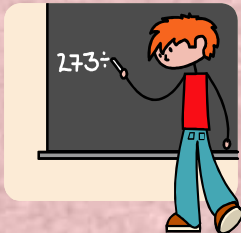
The objectives of this committee shall be to focus on opportunities for FES to improve its internal and external public relations efforts through effective use of communications.

Charter and Bylaws Committee

Maintain a continuing study of the Society's Charter and Bylaws and make recommendations to the Board for revisions. Review proposed amendments to the Charter and Bylaws and make recommendations to the Board on the manner in which they shall be incorporated in the wordage of the Charter and Bylaws.

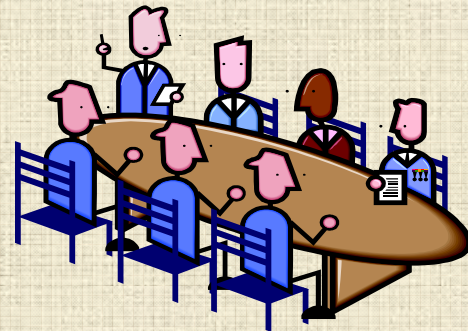
Commission on Legislative & Government

The purpose of the commission is to provide the Florida Engineering Society with maximum participation in and proper coordination of its legislative and government relations program.



THANK YOU TO OUR NEW STUDENT
PROFESSIONAL DEVELOPMENT
COMMITTEE VOLUNTEER

SEAN DONAHUE, P.E.
LBFH, Inc.



Florida Engineering Foundation

The Florida Engineering Foundation was established in 1986 to encourage and assist students in pursuing engineering careers, and to educate the public about engineering. The organization, composed of volunteer engineers from the Florida Engineering Society, receives and administers funds to promote and improve engineering education in Florida, with the goal of placing the state as a technological leader in the global economy.

DID YOU KNOW:

- that the Florida Engineering Foundation provides all of the funds to FES for the State Scholarship program - \$28,000?
- that FEF supports programs such as MATHCOUNTS, YES We Care Scholarships, Project CREATE, JETS Clubs, and more?
- that FEF's Board is considering a budget that would almost double in 2006/2007 the FEF dollars spent on engineering education in 2005/2006?

Are you an FEF member? Please join in 2006/2007. Individual memberships range from \$25 to \$1,000. We need your help!! Check your FES dues statement or contact Dick Gasset, PE at adme2002@msn.com.

New Year, New Members

FES will begin another exciting year of membership on October 1st. We need your assistance in promoting FES to the entire engineering community. New members benefit from chapter programs, leadership opportunities, networking, building awareness about the profession, legislative gains, and that's just the beginning. Membership applications are available at www.fleng.org or contact the Member Services Department at 850-224-7121. Each new member strengthens the Society.

The FES Treasure Coast Chapter Website has been updated!!

Please visit <http://old.fleng.org/treasurecoast/> for Chapter news and information, photos from previous Chapter events, and the "Member's Ride of the Month". Please contact Marcos Montes De Oca, PE at Marcos-M@lbfh.com to contribute to our website.

CONTINUING EDUCATION NEWS



CIVIL PE REVIEW COURSE ...WITH A GUARANTEE

September 8-10

September 29-October 1

Renaissance Orlando Hotel – Airport

Take the two-weekend-long course offered by FES, meet the course completion requirements, and you have our guarantee. If you don't pass the exam, you may repeat the course for up to one year after your initial enrollment at no additional charge. What are the course completion requirements? You must attend 80% of the course and complete 80% of the assignments including a sample exam.

Our instructors combine knowledge of engineering principles, professional experience, and problem-solving abilities with practical insights into the exams. Homework assignments, practice exams, and instructor handouts will develop and reinforce critical test-taking skills. Through a partnership with Professional Publications, Inc. FES can offer a discount on PPI study materials.

Brochure and on-line registration are available on our Web site www.fleng.org

Until August 18th
\$695

After August 18th
\$795



CLASSIFIEDS



Project Engineers & Project Managers

LBFH, Inc. leverages the skills and experience of all employees and offers an environment that fosters individual growth and rewards performance. You'll be working for an award-winning company with an impressive track record. This is an amazing opportunity to join LBFH, Inc. and gain experience as a Project Engineer, Team Leader or Project Manager.

Qualifications:

- Minimum of 6+ years progressive civil engineering experience in Land Development, Water Resources or Water and Wastewater.
- BS or Master's degree in engineering from an A.B.E.T accredited college or university.
- Professional Engineering License required (preferably registered in Florida).
- 3+ years experience supervising/managing a team of engineers and techs (for Team Lead and Project Manager positions).

Demonstrated successful performance in dealing with all levels and internal and external business clients.

LBFH, Inc. provides Civil Engineering, Survey/Mapping & GIS services to private and government clients. Our corporate office is located in Palm City, Florida with branch offices in West Palm Beach, Ft. Pierce, Okeechobee, Ft. Myers and Or-



Responsibilities include:

Design, permitting and production of civil engineering plans and construction documents as well as close coordination with client representatives.

Supervision of CAD technicians and EIT's

Position Requirements:

Excellent communication and organizational skills. PE is not required but candidates must be eligible for Florida registration.

Benefits:

Group health and dental insurance. Company-paid life insurance, short and long term disability insurance plan.

401(k) retirement plan with employer match.

Salary commensurate with experience.

Tuition Reimbursement Program.

Continuous professional learning environment.

Join our award-winning team and great work environment with career advancement opportunities.

Resumes:

Please email to hr@creechinc.com or Fax: (772) 283-8104. For a confidential interview, please contact Mary Correia at (772) 283-1413. Please visit our website at www.creechinc.com for more positions available



CLASSIFIEDS



Our dynamic team is seeking exceptionally talented candidates for the following positions in our St. Lucie office:

ENGINEER III

Civil engineer with FL PE needed w/ land development design exp to manage projects and build client base in St Lucie. Familiarity w/ local agencies desired.

ENGINEER I

1+ years experience with land dev & government design projects. AutoCAD a must.

TRAFFIC ENGINEER I

0-2 yrs transportation engineering exp w/ signal design , traffic impact studies, parking utilization etc. AutoCAD and/or Microstation desirable.

Miller Legg, is celebrating 40 years of providing outstanding professional services in Florida and our dynamic company is always looking for energetic professionals to join our Team.

Visit www.millerlegg.com to learn more about our St. Lucie, Orlando, Pembroke Pines, Ft. Lauderdale & West Palm Beach offices.

Please forward your résumé to:

Miller Legg

Attn: Human Resources
749 SE Port St. Lucie Blvd.
Port St. Lucie, 34984

Email: HR@millerlegg.com

Fax: 407-629-7883



Leading National Consulting Firm expanding land development operations in West Palm Beach, Port St. Lucie, and Vero. Positions available:

- Survey Party Chiefs
- Survey Instrument
- Survey and Engineering CADD Technicians
- Entry Level Engineering Graduates
- Project Engineers and Designers
- Project Managers

Fax Résumé to Arcadis:
West Palm Beach – (561) 684-1812
Port St. Lucie & Vero – (772) 878-1802
EOE Employer



CLASSIFIEDS

We believe.
A pencil in the right person's hand
can make the world a better place to live.

MSCW
www.MSCWinc.com
Orlando Headquarters
817 472 9188

At MSCW we are a team of talented individuals with diverse skills. We are a group of professionals with unique visions but common goals. And we are looking for other individuals to join our team – people with vision, people with passion, people who want to help us change the world we live in.

We are currently seeking to fill multiple openings in our Stuart office, including the positions of staff and project engineers, project managers and all levels of planner/designers. MSCW offers a generous compensation and benefits package, including health, dental, vision, life and disability coverage, 401(k) retirement benefits and ample paid time off.

To learn more about current openings at MSCW – formerly Miller Sellen Corner & Walsh – visit our new website at www.MSCWinc.com.

Civil Engineer needed with experience in design and preparation of land development projects and surface water management design and permitting. BSCE with PE or ability to obtain within 1 year preferred. Salary commensurate with experience and qualifications.

This position is with a growing Engineering Firm with offices in Fort Pierce and Okeechobee, FL.

Interested parties, please forward resumes to:

Shanda Walker
210 NW Park Street, Suite 204
Okeechobee, FL 34974
Phone: 863-467-0076
Fax: 863-467-0091



CLASSIFIEDS



Engineering & Water Resources, Inc.

7881 SW Ellipse Way, Stuart, Florida 34997 • 772-781-6408 • Fax: 772-781-6409 •
www.ewr1.com

Engineering & Water Resources, Inc. (EWR) currently has the following openings:

Professional Engineer with strong land development design and permitting background

Graduate Engineer with a BS or Master's degree in engineering from an A.B.E.T accredited college or university, preferably with an E.I. classification

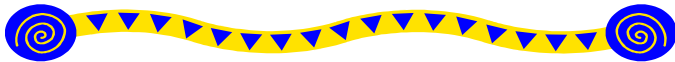
Agricultural Engineer with experience in agricultural nutrient management plans and storm water management systems.

EWR is a young, aggressive and growing multidisciplinary consulting firm (visit our web site at ewr1.com). We provide an excellent benefit program, including full family medical paid by the company, life insurance, cafeteria plan, 401K, paid time off, and competitive compensation. Send your resume to Melissa Corbett, P.E. at melissac@ewr1.com or fax to 772-781-6409.

Classifieds



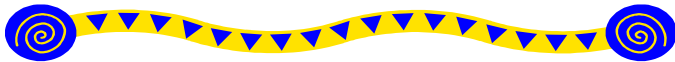
Did you know that the Treasure Coast Chapter will publish POSITIONS WANTED and HELP WANTED notices for its members at no cost?! Please email your advertisements to Jon Murray, E.I. at Jon-M@LBFH.com



Quote of the Month

"The well being of the world largely depends upon the work of the engineer. There is a great future and unlimited scope for the profession; new works of all kinds are and will be required in every country, and for a young man of imagination and keenness I cannot conceive a more attractive profession. Imagination is necessary as well as scientific knowledge."

Sir William Halcrow
Addressing the Institution of Civil Engineers



For Members Only - If you would like a link to your company's web page added to our web site, please e-mail Jon Murray, E.I. at Jon-M@LBFH.com or call (772) 286-3883.

Membership News

Are you getting back for giving back to FES?

This year reward yourself with FREE incentive prizes from FES. Each time you give back to FES through a new member sponsorship, you will receive a prize. Prizes vary from FES Bucks (to use like cash at FES events), to free membership dues at the state and national level, to a top prize of a two night stay at the Marco Island Marriott. A complete list of membership incentive prizes is available at www.fleng.org along with the FES membership application. For additional information about sponsoring new members, contact Kate Robinson Ray, Director of Membership Recruitment at 850-224-7121 or KRay@fleng.org.

Questions or Comments?

If you have any questions/comments, or if you would like something included in the monthly publication, please feel free to contact Jon Murray, E.I. at Jon-M@LBFH.com or by telephone at (772) 286-3883

2006 - 2007 Treasure Coast Chapter Board Members

Marcos Montes De Oca, P.E., President (863) 763-8999 Marcos-M@LBFH.com
Heidi Henderson, E.I., Vice President (772) 283-1413 HHenderson@Creechinc.com
Will Cornelius, E.I., Treasurer (772) 878-0072 WCornelius@Ardaman.com
Jonathan Murray, E.I., Secretary (772) 286-3883 Jon-M@LBFH.com
John Donahue, P.E., Regional Vice President (772) 461-2450 John-D@LBFH.com
Chad Rucks, P.E., Past-President (863) 763-8999 Chad-R@LBFH.com
Patrick J. Ferland, P.E., State Director (772) 878-1700 Pferland@arcadis-us.com

TREASURE COAST CHAPTER

Chartered 1987

FLORIDA ENGINEERING SOCIETY

Affiliated with

NATIONAL SOCIETY OF PROFESSIONAL ENGINEERS

P.O. BOX 8764, PORT ST. LUCIE, FL 34985

