



BLACKLINES

*A Monthly Newsletter for Members of the
Treasure Coast Chapter of the Florida Engineering Society*

Volume 21, Issue 5

October, 2006

A Word from the FES Treasure Coast President...

A quick recap on what's turning the wheels in my head, The University of Florida is 6-0, GO GATORS!!, Congressmen Mark Foley is an alleged sexual deviant and what is he doing with my contribution?, a gallon of gas is \$2.42 and I'm getting 12 mpg, water quality I'm sure was achieved in basin three at 35.4' or was it 34.5', will Melissa let the dog out at lunch? FES TC needs the president's message, elevation at section B at Sta. 2+00 is 25.6', pi has been recited from memory to 100,000 decimal places – why?, the budget is gone on the turn-lane project, email is down, what is that Head On stuff anyway and Rob is holding on line two wanting the elevation for control structure # 4.

Does any of this sound familiar? I hope not, unless you are me at 8:00 am – Monday.

Are ideas for each project, home-life and other random items running together?

I've got the answer it's easy and it's this month's message...

Stop, and Focus.

Not only on how you can assist FES Treasure Coast, but your client's needs as well as your family's. By listing FES TC first, I am not asking for you to orchestrate the perfect fundraiser in the Bahamas instead of going to your child's little league game, and by listing the client before your family - ok I'm not getting into that one. I am also not asking you to bill admin/overhead for six hours daydreaming items for our chapter, unless you can get away with that.

I am asking you to *stop, and focus* on generating an idea or a way to help our chapter promote Engineering. It may even be a way our chapter can benefit the community or ways to become involved with other societies. I look forward to hearing your ideas. Thank you all again for your participation and support at the past meetings.

Marcos Montes De Oca, P.E.
This Month's Designated Fearless Leader

October Meeting at a Glance...

Who: Rich Soviero, Jensen Beach High School

What: Project Lead the Way

Also... an update on the upcoming MathCounts FES

Where: Club Med Sandpiper, Port St. Lucie, Florida

When: October 19, 2006, 6:00 pm Cocktail Hour, 7:00 pm Dinner

Cost: \$35/person

RSVP: Heidi Henderson by October 16th at HHenderson@Creechinc.com or by calling (772) 283-1413.

FES Directory Advertising Opportunities

Advantages in Advertising

The *FES Annual Directory and Guide* is the annual directory of members. This directory and guide reaches over 4,800 decision-makers by bringing news, analysis, and trends that affect engineers in government, private practice, industry, construction, retired, and education. Your ad in *FES Annual Directory and Guide* effectively reaches the decision-makers who purchase products and services.

Readership Profile

For 91 years, professional engineers have depended upon the *FES Annual Directory and Guide* for the latest in-depth news and information regarding Florida's engineering community. It is the largest statewide directory and our members' only directory. Readers include policy-makers, administrators, project managers, and engineer interns. These professionals are an integral part of the purchasing decisions representing the following areas:

Accident Investigation	Environmental	Nuclear
Aeronautical/Aerospace	Fire Protection	Petroleum
Agriculture	Forensic	Pile Testing
Airports	Foundations	Planning
Architecture	Geographic Inf Sys	Plumbing
Bridges	Geotechnical	Research & Development
Building Design	Hazardous Waste	Sanitary
Chemical	HVAC	Solid Waste
Civil	Hydrogeological	Structural
Coastal	Industrial	Surveying/Photogrammetry
Computer Consulting	Laboratory Services	System Safety-Reliability
Construction Management	Land Development	Testing
Electrical	Marine Structures	Transportation
Energy Management	Mechanical	Water/Wastewater and More
Energy/Power Plants		

To advertise in the 2007 FES Directory and Guide, contact Debbie Hall or Kathy Roland at 850-224-7121.

Florida Engineering Foundation



Did you know....

the Florida Engineering Foundation Board of Trustees voted to expand their budget by \$30,000 to support five new education programs in 2006/2007? New programs include:

- Expanding State Science Fair awards (Including a summer internship for a winner.)
- Establishing teacher stipends / awards for outstanding teachers.
- Providing funds to prepare K-12 presentation materials.
- Providing funds to support college Student Chapter competitions.
- Adding scholarships dedicated to minority students.

Are you a member of the Florida Engineering Foundation? In order to meet the needs of the programs described above, we need the support of members. Please join FEF for 2006/2007. Individual memberships range from \$25 to \$1,000. Donations can be made on your FES dues statement or by contacting Dick Gassett at adme2002@msn.com.

Ever Enjoy Building Your Own City?

The National Engineer's Week Future City Competition is a program to provide a fun and exciting educational engineering opportunity for seventh and eighth grade students. The program combines a stimulating engineering challenge with a "hands-on" application to allow students, with the assistance of an Engineering mentor, to present their vision of a city of the future.

Volunteers are always needed, but now **you** can help a local Future City program at Anderson Middle School. Please contact Jon Murray at Jon-M@LBFH.com if you are interested in taking part in this outstanding opportunity. For additional information regarding the Future City Competition, please visit <http://www.futurecity.org/>.



A Look Ahead at the November Meeting...

- Who:** Kelly Cranford, SFWMD
- What:** Discussion on SFWMD Ranchette Permitting
- Where:** Precise location in Okeechobee to be announced later
- When:** November 9, 2006

FES Customer ID Number...

What is it and why do I need to know it?

The FES Customer ID number is assigned to each FES Member and non-member that participates in any activity that FES offers. The Customer ID Number is also known as the FES Member Number (for members only). **The Customer ID Number provides you access to the customer log in section of www.fleng.org. In this section you are able to access and update member information, renew membership dues, and download PDH certificates for hours earned at FES seminars.**

How do I find out my Customer ID Number?

FES Members – Your Customer ID Number (also known as your membership number) is provided on your annual dues statement, member record, and membership card. This number is also provided in the body of the e-mail confirmation received for each FES event you register to attend.

FES Non-members – Your Customer ID Number is provided on the body of e-mail confirmation received for each FES event you register to attend.

All FES Customers – FES staff is available to provide customer numbers by phone or e-mail, 850-224-7121 or fes@fleng.org.

What is my FES Password?

By default, the FES Password is your last name unless you have changed the password after you first logged into www.fleng.org. After your first time logging into the FES Customer Log In system, you have the option to change your password. This option is available under Customer Information. If you are unable to remember your password, please contact FES at 850-224-7121 or fes@fleng.org.

Does my FES Customer ID Number change?

NO! Once a number has been assigned it will remain the same for each seminar that you attend. It even remains consistent throughout membership status (if you join or discontinue membership).

FES Staff encourages you to have your FES Customer ID Number (same as your FES Member Number) **in a readily accessible position.** This number will be needed to access PDH certificates, member information, and renew membership in FES. If you need assistance with your Customer ID Number or accessing the information on the web site, please contact FES at 850-224-7121 or fes@fleng.org.

ACEC/Florida Scholarship

The ACEC Florida Scholarship will honor one Florida college student expressing interest and commitment to the business and management of the engineering profession. To qualify, a student must be a US citizen pursuing a Bachelor's degree in an Accreditation Board for Engineering and Technology (ABET)-approved engineering program or in an accredited land-surveying program. Students must be entering their junior, senior, or fifth year of college to qualify.

One statewide winner will be determined, and awarded an ACEC Florida Scholarship in the amount of \$1,000. That scholarship recipient will then be forwarded to ACEC for consideration for the ACEC Scholarships, \$5,000 for the ACEC Scholar of the Year and \$3,000 for the ACEC College of Fellows Award. Please visit <http://www.fleng.org/images/scholarships/ACECScholarshipApp.pdf> to download the application.

Mark Your Calendars



October 19:

FES-Treasure Coast Chapter Meeting
Club Med, Port St. Lucie, FL

October 23:

AFP/CITS Training
Embassy Suites,
Lake Buena Vista, Orlando, FL

October 25-26:

FES Stormwater Management: A Designer's
Course (2nd Offering)
Double Tree at the Entrance to Universal Stu-
dios Orlando, Orlando, FL

October 26-28:

Florida Engineering Leadership Institute
(Session 1)
Tampa Bay Grand Hyatt, Tampa, FL

October 31-November 2:

Project Management Fundamentals
(2nd Offering)
Hawthorn Suites, Orlando, FL

November 7-8:

FICE/FDOT Pond Design Course
Embassy Suites, Fort Lauderdale, FL

November 8:

FES Wind Load Design
Bay Point Marriott, Panama City, FL

November 30:

FES-Treasure Coast Annual Shrimp Boil
Jensen Beach Park

December 7:

FICE/FDOT Drainage Standard Indexes
Renaissance Resort at World Golf Village,
St. Augustine, FL

December 7-8:

FICE/FDOT Florida Bridge Scour Practices
Renaissance Resort at World Golf Village,
St. Augustine, FL

TREASURE COAST CHAPTER COMMITTEE OPPORTUNITIES

We still need volunteers for many State Committees. Below is a list of the committees that are available. For details on a specific committee and an explanation of responsibilities, please see the FES website (<http://www.fleng.org/aboutfes.cfm>). If you are interested in volunteering for any of these committees, please contact Marcos Montes De Oca at 863-763-8999 or marcos-ml@bfh.com.

Energy Committee

Study and make recommendations to the Commission on Legislative and Government Relations of the Florida Engineering Society with respect to energy matters affecting the public and the profession. Prepare studies and make recommendations to the Commission on energy policies or positions that would be appropriate for the Society to adopt and promote.

Communications Advisory Committee

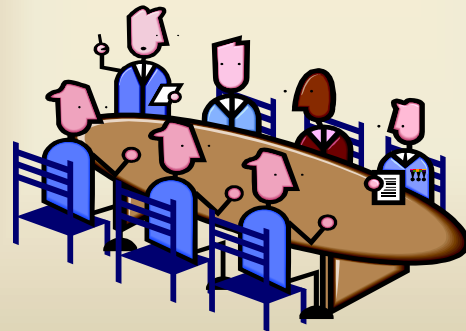
The objectives of this committee shall be to focus on opportunities for FES to improve its internal and external public relations efforts through effective use of communications.

Charter and Bylaws Committee

Maintain a continuing study of the Society's Charter and Bylaws and make recommendations to the Board for revisions. Review proposed amendments to the Charter and Bylaws and make recommendations to the Board on the manner in which they shall be incorporated in the wordage of the Charter and Bylaws.

Commission on Legislative & Government

The purpose of the commission is to provide the Florida Engineering Society with maximum participation in and proper coordination of its legislative and government relations program.



CONTINUING EDUCATION NEWS



FES Releases 3 New Seminar Titles–DVD Format Earn PDHs at Home or in Your Office Order Your DVDs Today

For Florida Laws and Rules: Proper PE Practice

61G-15 Florida Administrative Code

You will learn what circumstances caused certain portions of the Rule to come into being and the most common errors engineers make in following the rules.

For Stormwater Design Pitfalls:

This course provides a detailed review of common engineering pitfalls experienced in the design of stormwater management systems. From the proper design of control structures to understanding the selection of runoff curve numbers and the proper selection of peak rate factors – your time will be well spent.

For Stormwater Hydraulics:

This course is about stormwater systems. The focus is on hydraulic design aspects relating to site-scale designs. Although this is a fast-paced review, you will find an abundance of reference materials full of examples on the CD that comes with the DVD.

To order your DVD courses today, visit <http://www.fleng.org/images/training/DVDOrderForm.pdf>



CLASSIFIEDS



Project Engineers & Project Managers

LBFH, Inc. leverages the skills and experience of all employees and offers an environment that fosters individual growth and rewards performance. You'll be working for an award-winning company with an impressive track record. This is an amazing opportunity to join LBFH, Inc. and gain experience as a Project Engineer, Team Leader or Project Manager.

Qualifications:

- Minimum of 6+ years progressive civil engineering experience in Land Development, Water Resources or Water and Wastewater.
- BS or Master's degree in engineering from an A.B.E.T accredited college or university.
- Professional Engineering License required (preferably registered in Florida).
- 3+ years experience supervising/managing a team of engineers and techs (for Team Lead and Project Manager positions).

Demonstrated successful performance in dealing with all levels and internal and external business clients.

LBFH, Inc. provides Civil Engineering, Survey/Mapping & GIS services to private and government clients. Our corporate office is located in Palm City, Florida with branch offices in West Palm Beach, Ft. Pierce, Okeechobee, Ft. Myers and Or-



Responsibilities include:

Design, permitting and production of civil engineering plans and construction documents as well as close coordination with client representatives.

Supervision of CAD technicians and EIT's

Position Requirements:

Excellent communication and organizational skills. PE is not required but candidates must be eligible for Florida registration.

Benefits:

Group health and dental insurance. Company-paid life insurance, short and long term disability insurance plan.

401(k) retirement plan with employer match.

Salary commensurate with experience.

Tuition Reimbursement Program.

Continuous professional learning environment.

Join our award-winning team and great work environment with career advancement opportunities.

Resumes:

Please email to hr@creechinc.com or Fax: (772) 283-8104. For a confidential interview, please contact Mary Correia at (772) 283-1413. Please visit our website at www.creechinc.com for more positions available



CLASSIFIEDS



Our dynamic team is seeking exceptionally talented candidates for the following positions in our St. Lucie office:

ENGINEER III

Civil engineer with FL PE needed w/ land development design exp to manage projects and build client base in St Lucie. Familiarity w/ local agencies desired.

ENGINEER I

1+ years experience with land dev & government design projects. AutoCAD a must.

TRAFFIC ENGINEER I

0-2 yrs transportation engineering exp w/ signal design , traffic impact studies, parking utilization etc. AutoCAD and/or Microstation desirable.

Miller Legg, is celebrating 40 years of providing outstanding professional services in Florida and our dynamic company is always looking for energetic professionals to join our Team.

Visit www.millerlegg.com to learn more about our St. Lucie, Orlando, Pembroke Pines, Ft. Lauderdale & West Palm Beach offices.

Please forward your résumé to:

Miller Legg

Attn: Human Resources
749 SE Port St. Lucie Blvd.
Port St. Lucie, 34984

Email:HR@millerlegg.com

Fax: 407-629-7883



Leading National Consulting Firm expanding land development operations in West Palm Beach, Port St. Lucie, and Vero. Positions available:

- Survey Party Chiefs
- Survey Instrument
- Survey and Engineering CADD Technicians
- Entry Level Engineering Graduates
- Project Engineers and Designers
- Project Managers

Fax Résumé to Arcadis:
West Palm Beach – (561) 684-1812
Port St. Lucie & Vero – (772) 878-1802
EOE Employer



CLASSIFIEDS

We believe.
A pencil in the right person's hand
can make the world a better place to live.

MSCW
www.MSCWinc.com
Orlando Headquarters
817 472 9188

At MSCW we are a team of talented individuals with diverse skills. We are a group of professionals with unique visions but common goals. And we are looking for other individuals to join our team – people with vision, people with passion, people who want to help us change the world we live in.

We are currently seeking to fill multiple openings in our Stuart office, including the positions of staff and project engineers, project managers and all levels of planner/designers. MSCW offers a generous compensation and benefits package, including health, dental, vision, life and disability coverage, 401(k) retirement benefits and ample paid time off.

To learn more about current openings at MSCW – formerly Miller Sellen Corner & Walsh – visit our new website at www.MSCWinc.com.

Civil Engineer needed with experience in design and preparation of land development projects and surface water management design and permitting. BSCE with PE or ability to obtain within 1 year preferred. Salary commensurate with experience and qualifications.

This position is with a growing Engineering Firm with offices in Fort Pierce and Okeechobee, FL.

Interested parties, please forward resumes to:

Shanda Walker
210 NW Park Street, Suite 204
Okeechobee, FL 34974
Phone: 863-467-0076
Fax: 863-467-0091



CLASSIFIEDS



Engineering & Water Resources, Inc.

7881 SW Ellipse Way, Stuart, Florida 34997 • 772-781-6408 • Fax: 772-781-6409 •
www.ewr1.com

Engineering & Water Resources, Inc. (EWR) currently has the following openings:

Professional Engineer with strong land development design and permitting background

Graduate Engineer with a BS or Master's degree in engineering from an A.B.E.T accredited college or university, preferably with an E.I. classification

Agricultural Engineer with experience in agricultural nutrient management plans and storm water management systems.

EWR is a young, aggressive and growing multidisciplinary consulting firm (visit our web site at ewr1.com). We provide an excellent benefit program, including full family medical paid by the company, life insurance, cafeteria plan, 401K, paid time off, and competitive compensation. Send your resume to Melissa Corbett, P.E. at melissac@ewr1.com or fax to 772-781-6409.



Be A Part Of It!

Martin County not only recognizes their employees, but also rewards them for their efforts. We offer an excellent benefit package, competitive wages and the chance to do great work with great people!

Project Engineer

Martin County Board of County Commissioners is seeking a energetic and devoted professional to perform managerial and administrative duties assisting the Department Director or designee with various complex engineering projects. The perfect candidate should be have considerable independent judgment and initiative in carrying out the daily operations of this section. For a detailed job description and application, please visit our website at www.martin.fl.us and click on the job opportunities page.

Martin County Board of County Commissioners
2401 SE Monterey Road
Stuart, FL 34996
772-221-2363



CLASSIFIEDS



Stormwater Engineer

The City of Fort Pierce is seeking a responsible technical and administrative position under the direction of the Engineering Stormwater Supervisor in the designing, constructing, inspecting, and monitoring of the City's stormwater projects including stormwater management compliance of private site development and City public works projects as required. All work is done with limited direction and training by the Stormwater Supervising Engineer. The position requires technical judgment and field decision. PE licensure required. For more information please contact:

Human Resource
City of Fort Pierce
P.O. Box 1480
772-221-2363

Classifieds



Did you know that the Treasure Coast Chapter will publish POSITIONS WANTED and HELP WANTED notices for its members at no cost?! Please email your advertisements to Jon Murray, E.I. at Jon-M@LBFH.com



Quote of the Month

“A bridge is built for us to pass over; it is a work of utility, and which should endure. It should be in keeping with its object, solid, clean, simple, well executed without vain ornament.”

*Paul Sejourne
Grandes Voûtes Par Paul Sejourne, ©1913*



For Members Only - If you would like a link to your company's web page added to our web site, please e-mail Jon Murray, E.I. at Jon-M@LBFH.com or call (772) 286-3883.

Membership News

Are you getting back for giving back to FES?

This year reward yourself with FREE incentive prizes from FES. Each time you give back to FES through a new member sponsorship, you will receive a prize. Prizes vary from FES Bucks (to use like cash at FES events), to free membership dues at the state and national level, to a top prize of a two night stay at the Marco Island Marriott. A complete list of membership incentive prizes is available at www.fleng.org along with the FES membership application. For additional information about sponsoring new members, contact Kate Robinson Ray, Director of Membership Recruitment at 850-224-7121 or KRay@fleng.org.

Questions or Comments?

If you have any questions/comments, or if you would like something included in the monthly publication, please feel free to contact Jon Murray, E.I. at Jon-M@LBFH.com or by telephone at (772) 286-3883

2006 - 2007 Treasure Coast Chapter Board Members

Marcos Montes De Oca, P.E., President (863) 763-8999 Marcos-M@LBFH.com
Heidi Henderson, E.I., Vice President (772) 283-1413 HHenderson@Creechinc.com
Will Cornelius, E.I., Treasurer (772) 878-0072 WCornelius@Ardaman.com
Jonathan Murray, E.I., Secretary (772) 286-3883 Jon-M@LBFH.com
John Donahue, P.E., Regional Vice President (772) 461-2450 John-D@LBFH.com
Chad Rucks, P.E., Past-President (863) 763-8999 Chad-R@LBFH.com
Patrick J. Ferland, P.E., State Director (772) 878-1700 Pferland@arcadis-us.com

TREASURE COAST CHAPTER

Chartered 1987

FLORIDA ENGINEERING SOCIETY

Affiliated with

NATIONAL SOCIETY OF PROFESSIONAL ENGINEERS

P.O. BOX 8764, PORT ST. LUCIE, FL 34985

