



PRESIDENT'S MESSAGE

Well just when it appeared that we were going to escape this hurricane season with minimal damage Hurricane Wilma came and surprised our area. I can't help to find it somewhat ironic that Wilma forced us to cancel our October Chapter Meeting, which was supposed to focus the effects from hurricane force winds and structural damage. I know many of us suffered damages to our homes and offices, and yet we are also asked to assist with cleanup and rebuilding efforts in our region. We are called upon as engineers to evaluate structural damage, rebuild damaged roadway, assist in drainage problems, and monitor debris disposal. This is a time that we are really being asked by the community for our assistance. This is a time to take pride in your work and how you can assist our neighbors.

In another partnership to help the recovery efforts for the victims of Hurricane Wilma, both FES and FICE have teamed up to create the Disaster Relief Fund. Members can make donations to the State FES Headquarters in Tallahassee, and funds will be distributed to those in the engineering community that are in need during this time. Contributions can be made by both individuals and companies.

If you would like to make a donation to the Disaster Relief Fund, please make checks payable to the FES/FICE Hurricane Wilma Relief Fund, PO Box 750, Tallahassee, FL 32302-0750.

Sincerely,

Chad O. Rucks, P.E.

Calendar of Events for Upcoming Months



November 8-9	FICE/FDOT Florida Bridge Scour Practices (Tallahassee)
November 11	Treasure Coast Chapter 5 th Annual Shrimp Boil
November 17-19	2006 FICE/FES Leadership Institute (Tampa)
December 13-14	FICE/FDOT Storm Drain Design (Orlando)
December 15-16	FICE/FDOT Pond Design Course (Orlando)
January 5-7	FES/FICE Leadership Institute Session 2 (Orlando)

Due to the upcoming holidays, the next chapter meeting will be in January. Information regarding this meeting will be sent out in next month's newsletter.

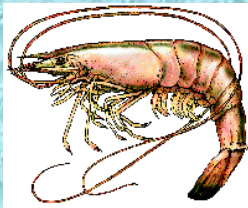
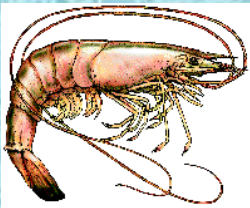
November Meeting at a Glance...

What: **5th Annual Shrimp Boil**

Where: Indian Riverside Park
1701 NE Indian River Drive
Jensen Beach

When: Friday, November 11
5:00 pm

Cost: \$25.00 for adults
\$15.00 for children 12 and under



The 5th Annual FES Treasure Coast Shrimp Boil will be held on Friday, November 11th beginning at 5:00 pm, at the Indian Riverside Park in Jensen Beach. Join your fellow engineers (and their families) for some post-hurricane socializing and good food. The cost will be \$25 per person (\$15 for children 12 and under). The cost includes peel-eat-shrimp, corn on the cob, baked red potatoes and New England Seafood's famous smoked fish dip and crackers. Chicken fingers will also be available for the children. Sodas will be provided, with adult beverages available for a small donation.

Please RSVP to Chad Rucks, P.E. at Chad-R@LBFH.com or 863-763-8999 by Tuesday, November 8th

TREASURE COAST CHAPTER COMMITTEE OPPORTUNITIES

We still need volunteers for many State Committees. Below is a list of the committees that are available, For details on a specific committee and an explanation of responsibilities, please see the FES website (<http://www.fleng.org/aboutfes.cfm>). If you are interested in volunteering for any of these committees, please contact Chad Rucks at 863-763-8999 or Chad-R@LBFH.com.

Energy Committee

Study and make recommendations to the Commission on Legislative and Government Relations of the Florida Engineering Society with respect to energy matters affecting the public and the profession. Prepare studies and make recommendations to the Commission on energy policies or positions that would be appropriate for the Society to adopt and promote.

Communications Advisory Committee

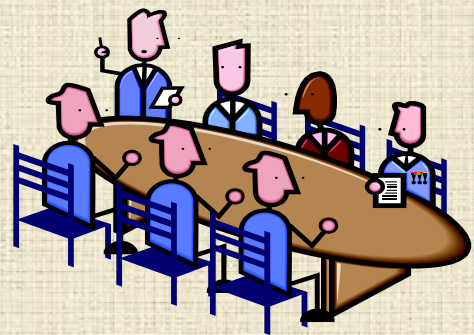
The objectives of this committee shall be to focus on opportunities for FES to improve its internal and external public relations efforts through effective use of communications.

Charter and Bylaws Committee

Maintain a continuing study of the Society's Charter and Bylaws and make recommendations to the Board for revisions. Review proposed amendments to the Charter and Bylaws and make recommendations to the Board on the manner in which they shall be incorporated in the wordage of the Charter and Bylaws.

Commission on Legislative & Government

The purpose of the commission is to provide the Florida Engineering Society with maximum participation in and proper coordination of its legislative and government relations program.



CONTINUING EDUCATION NEWS

FICE/FDOT Florida Bridge Scour Practices

November 8-9, 2005 – Tallahassee

There have been many new developments in bridge scour research since the last FDOT Bridge Scour Workshop. Numerous laboratory experiments have been conducted with bridge piers with complex geometry and significant advances have been made in the ability to predict design scour depths at these structures. The short course will cover all types of bridge scour, but will concentrate on the prediction of design scour depths at complex piers in cohesionless sediments. A brief overview of the methodology for predicting scour and erosion in cohesive sediments and erodible rock will also be presented as time permits. **All attendees are required to bring an IBM PC Notebook Computer.** Attendees will receive a free copy of a Microsoft EXCEL program to aid in computing equilibrium scour depths. This course should be of interest and benefit to both engineers new to this topic as well as those that have attended earlier FDOT Scour Workshops. Participants earn 15 PDHs towards Technical Engineering Credit valid for Florida P.E. license renewal.

Cost:

FES/FICE Members and FDOT Employees - \$575.00

Non-Members/non-FDOT Employees - \$675.00

FICE/FDOT Storm Drain Design Course

December 13-14, 2005 – Orlando

This is a two-day course covering the rational method, inlet and pavement hydraulics, pipe hydraulics and system layout. Participants will design a system by hand, and complete the FDOT Storm Drain Tabulation Form using calculators, and the FDOT slide calculator (provided). A small-scale flume will be used to pavement flow and inlet hydraulics. Participants earn 15 PDHs towards Technical Engineering Credit valid for Florida P.E. license renewal.

Cost:

FES/FICE Members and FDOT Employees - \$525.00

Non-members/non-FDOT Employees - \$625.00

FICE/FDOT Pond Design Course

December 15-16, 2005 – Orlando

This is a two-day course where the participants will design a stormwater facility using basic spreadsheet routines. Course content will include an overview of regulatory requirements and a discussion of water quality methods with emphasis on wet detention. Rainfall, design storms, and the NRCS curve number runoff method will be discussed. The course also covers the storage indication method, which will be used for pond routing. FDOT staff from a nearby District will make one or more presentations about stormwater management facilities during the class. **Participants need to bring a laptop that has Adobe Acrobat Reader and Excel software installed to participate fully in this course.**

Participants earn 15 PDHs towards Technical Engineering Credit valid for Florida P.E. license renewal.

Cost:

FES/FICE Members and FDOT Employees - \$525.00

Non-members/non-FDOT Employees - \$625.00



CLASSIFIEDS



CIVIL ENGINEER

Great Salary, Great Benefits and Endless opportunities await you, in one of the fastest growing communities in Florida. Port St. Lucie is looking for a Civil Engineer for our Utilities department. This is an advanced professional engineering position with a variety of complex Utility duties. Graduation from an accredited four-year college or university with a Bachelor's Degree in Civil Engineering, and five (5) years experience in management and civil engineering is required along with registration as a Professional Engineer in Florida. Starting Salary \$50K-\$62K D.O.Q.

Engineering Intern

Graduation from an accredited four-year college or university with a Bachelor's Degree in Environmental or Civil Engineering. Registration as an Engineering Intern in Florida – preferred. Starting Salary \$40K-\$50K D.O.Q.

For more information and a downloadable application visit our website at www.cityofpsl.com. EEO, DFWP.

Project Engineers & Project Managers

LBFH, Inc. leverages the skills and experience of all employees and offers an environment that fosters individual growth and rewards performance. You'll be working for an award-winning company with an impressive track record. This is an amazing opportunity to join LBFH, Inc. and gain experience as a Project Engineer, Team Leader or Project Manager.

Qualifications:

- Minimum of 6+ years progressive civil engineering experience in Land Development, Water Resources or Water and Wastewater.
- BS or Master's degree in engineering from an A.B.E.T accredited college or university.
- Professional Engineering License required (preferably registered in Florida).
- 3+ years experience supervising/managing a team of engineers and techs (for Team Lead and Project Manager positions).
- Demonstrated successful performance in dealing with all levels and internal and external business clients.

LBFH, Inc. provides Civil Engineering, Survey/Mapping & GIS services to private and government clients. Our corporate office is located in Palm City, Florida with branch offices in West Palm Beach, Ft. Pierce, Okeechobee, Ft. Myers and Orlando. We offer competitive salaries and an excellent benefits package including health insurance, 401(k), Paid Time Off and flexible schedules. Please submit resumes with salary expectations to careers@lbfh.com or visit our website at www.lbfh.com for more information.



Our dynamic team is seeking exceptionally talented candidates for the following positions in our St. Lucie office:

ENGINEER III

Civil engineer with FL PE to design plans & build staff. Land development design & local permitting experience required.

CAD TECHNICIAN

2+ years experience with land development & gov't design projects & specs. AutoCAD a must.

Miller Legg, is celebrating 40 years of providing outstanding professional services in Florida and our dynamic company is always looking for energetic professionals to join our Team. We offer excellent growth opportunities, professional development, a profit-sharing bonus program, tuition reimbursement and a comprehensive benefits package. DFWP/EOE.

Visit www.millerlegg.com to learn more about our St. Lucie, Orlando, Pembroke Pines, Ft. Lauderdale & West Palm Beach offices.

Please forward your résumé to:

Miller Legg

Attn: Human Resources
749 SE Port St. Lucie Blvd.
Port St. Lucie, 34984

or apply on online through our **Career Central**
Email: HR@millerlegg.com or **Fax:** 407-629-7883

Did you know that the Treasure Coast Chapter will publish POSITIONS WANTED and HELP WANTED notices for its members at no cost?! Please email your advertisements to Will Cornelius, E.I. at WCornelius@Ardaman.com (Sorry, but this offer does not apply to employment agencies working for a fee.)

Membership News

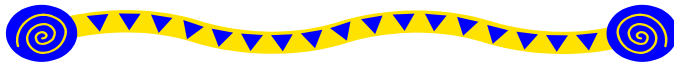
Are you getting back for giving back to FES?

This year reward yourself with FREE incentive prizes from FES. Each time you give back to FES through a new member sponsorship, you will receive a prize. Prizes vary from FES Bucks (to use like cash at FES events), to free membership dues at the state and national level, to a top prize of a two night stay at the Marco Island Marriott. A complete list of membership incentive prizes is available at www.fleng.org along with the FES membership application. For additional information about sponsoring new members, contact Kate Robinson Ray, Director of Membership Recruitment at 850-224-7121 or KRay@fleng.org.



Classifieds

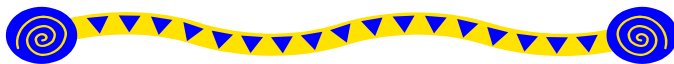
Did you know that the Treasure Coast Chapter will publish POSITIONS WANTED and HELP WANTED notices for its members at no cost?! Please email your advertisements to Will Cornelius, E.I. at WCornelius@Ardaman.com



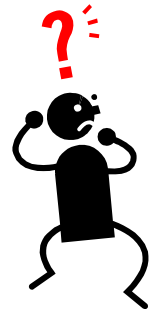
Quote of the Month

“Life is too short for stock”

- *The Marcos*



For Members Only - If you would like a link to your company's web page added to our web site, please e-mail Will Cornelius, E.I. at WCornelius@Ardaman.com or call (772) 878-0072.



Questions or Comments?

If you have any questions/comments, or if you would like something included in the monthly publication, please feel free to contact Will Cornelius, E.I. at WCornelius@Ardaman.com, or by telephone at (772) 878-0072

2005 - 2006 Treasure Coast Chapter Board Members

Chad Rucks, P.E., President (863) 763-8999 Chad-R@LBFH.com
Marcos Montes De Oca, E.I., Vice President (863) 763-8999 Marcos-M@LBFH.com
Heidi Henderson, E.I., Treasurer (772) 283-1413 HHenderson@Creechinc.com
Will Cornelius, E.I., Secretary (772) 878-0072 WCornelius@Ardaman.com
John Donahue, P.E., Regional Vice President (772) 461-2450 John-D@LBFH.com
David Andre, P.E., Past-President (772) 878-0072 DAndre@Ardaman.com
Patrick J. Ferland, P.E., State Director (772) 878-1700 Pferland@arcadis-us.com



TREASURE COAST CHAPTER
Chartered 1987
FLORIDA ENGINEERING SOCIETY
Affiliated with

NATIONAL SOCIETY OF PROFESSIONAL ENGINEERS
P.O. BOX 8764, PORT ST. LUCIE, FL 34985

