

PRESIDENT'S MESSAGE

Will B. Cornelius II, P.E.

I often watch SportsCenter on ESPN as part of my daily morning routine. Their "Did you know" segments became the inspiration for this month's President's Message....

Did you know this is the 8th year of our Project Lead-the-Way program with Lincoln Park Academy? Through Project Lead-the-Way, our chapter members have had the opportunity to closely interact with local high school students who are considering a career in engineering. Project Lead-the-Way has grown from about 18 students in its first year to over 80 students this year. Also, did you know that several of our local chapter scholarship winners over the past few years participated in Project Lead-the-Way? Please mark May 14th on your calendar and plan on participating in the evaluation of the student presentations.

Did you know during the upcoming FES/FICE Annual Summer Conference and Exposition in Naples, our fellow chapter member Jen Porter, P.E. will be named the chair of the State K-12 Committee? She has done a spectacular job with our Treasure Coast Chapter K-12 Committee, and I am excited to see the growth and progress of this committee all over the state under her leadership.

Did you know that a few months ago Nebraska became the first state in the country to introduce legislation (LB 742) that would require a college-level education beyond a bachelor's degree for licensure as a professional engineer? This bill's introduction has highlighted the various opinions within the engineering profession regarding the appropriate educational requirements for engineering licensure, which began several years ago after a committee from within the National Council of Examiners for Engineers and Surveyors (NCEES) recommended that the Model Law for all state engineering boards be amended to require an additional 30 credit hours in upper-level undergraduate or graduate-level courses before taking the PE exam.

Did you know that my term as chapter president is almost at its end? The call for nominations for Treasurer and Secretary for the 2008-2009 term are now open. Please contact Marcos Montes De Oca, P.E. if you or someone you know is interested in becoming part of the leadership for our Treasure Coast Chapter of FES.

Calendar of Events for Upcoming Months



May 8 & 9	GMEC Conference (Walt Disney World)
May 14	Treasure Coast Chapter Project Lead-the-Way Presentations and Evaluations (Lincoln Park Academy)
May 21 & 22	FICE/FDOT Consultants' Conference (Orlando)
June 7	22 nd Annual Treasure Coast Chapter Golf Tournament
June 13 & 14	FES Annual Leadership Conference (St. Augustine)
August 6 - 9	FES/FICE 92 nd Annual Summer Conference and Exposition (Naples)

May Meeting at a Glance...

- What:** Project Lead-the-Way
- Where:** Lincoln Park Academy cafeteria
1806 Avenue I, Fort Pierce
- When:** Wednesday, May 14th
Begins promptly at 6:00 pm
- Cost:** **FREE!!**
- RSVP:** David Andre, P.E. at (772) 807-9191
or dandre@acceinc.com

New Board Members Needed!!

We are now accepting nominations for new officers and some committee positions. Although all offices are up for re-election, we traditionally see all officers moving up one position, which will leave the positions of Treasure Coast Chapter Treasurer and Secretary open for new board members.

The treasurer's primary responsibility is to be the chapter's chief financial officer. The secretary's primary responsibilities are to take minutes at the chapter board meetings and to assist the chapter president with the preparation of the newsletter. All board members are expected to attend most of the chapter meetings and all of the monthly board meetings.

Please contact Marcos Montes De Oca, P.E. at (863) 763-8999 or via email at Marcos-M@BoyleEngineering.com if you or someone you know is interested in becoming part of the leadership for our Treasure Coast Chapter of FES.

COMMITTEE CHAIRS

FES is a member driven organization. Our volunteers steer the Society in the best direction. Ideas and programs are created at the committee level and impact the organization at each level. Becoming part of a FES committee is very simple and rewarding.

We have several new volunteers, however, we still need a few more for our State Committees. For further details on a specific committee, or if you are interested in volunteering for any of these committees, please contact Will Cornelius at (772) 878-0072 or WCornelius@Ardaman.com.

In addition, please thank your fellow members who are volunteering their time to make a difference.

COMMITTEE CHAIRPERSONS

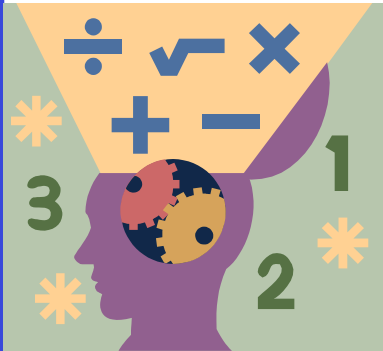
- Annual Meeting Steering – Jen Porter, P.E.
- Awards – **VACANT**
- Charter & Bylaws – Adam Schildmeier, E.I.
- Communications Advisory – **VACANT**
- Conservation & Env. Quality – Richard Creech, P.E.
- Constructed Environment – Allen Bottorff, P.E.
- Energy – **VACANT**
- Ethical Practices – Melissa Corbett, P.E.
- Golf Tournament – Pat Ferland, P.E.
- K-12 Education – Jen Porter, P.E.
- K-12 Education co-chair – Sarah Henke, E.I.
- K-12 Education co-chair – Adam Schildmeier, E.I.
- Leadership Advisory – **VACANT**
- MathCOUNTS – Kelly Cranford, P.E.
- MathCOUNTS – Chad Rucks, P.E.
- Membership Development – John Donahue, P.E.
- Professional Concerns – Allen Bottorff, P.E.
- Professional Development – **VACANT**
- Scholarship Co-Chair– Will Cornelius, P.E.
- Scholarship Co-Chair – Paul Bangs, P.E.
- Student Prof. Development – Sean Donahue, P.E.

CHAPTER LIAISON REPRESENTATIVES

- Prof. Eng. in Government - Kelly Cranford, P.E.
- Engineers in Construction - Paul Bangs, P.E.
- Engineers in Education - Jen Porter, P.E.
- Professional Engineers in Industry - **VACANT**
- Professional Engineers Retired - **VACANT**

K-12 Corner - Connecting Engineers with Kids

By Jennifer Porter, P.E. - Chair, Treasure Coast K-12 Committee



When did you realize you wanted to become an engineer? Did a teacher or guidance counselor recognize your interest in math and science and introduce you to engineering? Was there a particular speaker during a Career Day that influenced your decision to become an engineer? Did you attend Career Fairs or other educational sessions in which engineers were present?

Would you like to be the one that helps a student get excited about a potential career in engineering??

Recent data indicates that the United States is lagging behind the rest of the world in the production of technology-related graduates. Our schools are not emphasizing coursework in math and science, and children who are proficient in those subjects are not being stimulated to consider engineering as a career.

In a world where computers are used for everything from writing research papers to communicating with people on the other side of the world, where video games allow players to control games with real movements instead of just a bunch of buttons and joysticks, and where every kid knows what “Myth Busters” is (but may not realize that it’s really just a bunch of cool science experiments), there should be a throng of students who are considering careers in technology...but unless someone reaches out to them with information on engineering, many of them won’t know about the variety of careers that are available to them.

The Treasure Coast K-12 Committee was started two and a half years ago, when then-FES President John Hall announced his initiative to bring engineers into the classroom. Since that time, eight local volunteers have made presentations to twenty-three elementary, middle, and high school classes in Martin County. After each presentation, I received incredible feedback from teachers, who were so impressed with the caliber of the speakers and were also so appreciative that our engineers took the time to speak to the children in our area.

I have also received positive feedback from our engineer volunteers. Jon Murray (Boyle Engineering) said, “I found it very rewarding to look at the students and see them concentrating on objects around the room from the desks they sat in, to the teacher’s computer, that I pointed out as being engineered systems.” Adam Schildmeier (Creech), had a similar experience and said, “It was very fulfilling to witness the students engage in the small experiments we did at the end of the presentation. It was great to help them understand that engineering is a part of their everyday lives.”

While I’m thrilled with the enthusiasm that our volunteers have displayed and the tremendous response we’ve had from teachers, I know that we can do more on the Treasure Coast to ensure that children know that they can translate their interest in math and science into a successful engineering career. I’d also like to continue to reach out to all young students so that they understand that almost everything around them is the result of the work of an engineer.

Of course, doing more means that additional help is needed – YOUR help. I urge each of you to register as a volunteer in the K-12 initiative by contacting me (jen.porter@aecom.com) or Kate Ray at the FES office. You won’t be in it alone – we’ll provide you with a presentation as well as some ideas for hands-on demonstrations.

You can be the speaker that sparks the interest of a future engineer.

For more information, please visit <http://www.fleng.org/k-12/index.html>





florida
engineering
society



National Society of
Professional Engineers®

TREASURE COAST CHAPTER FLORIDA ENGINEERING SOCIETY

22nd Annual Golf Tournament
SATURDAY, JUNE 7TH, 2008
4 - Player Scramble

to Benefit:
MATHCOUNTS
RAY WHITE MEMORIAL SCHOLARSHIP FUND
PROJECT LEAD-THE-WAY

When: Saturday, June 7, 2008
8:00 am Shotgun Start
(7:00 am Registration)

Prizes: 1st, 2nd, 3rd Place Low Net
1st Place Low Gross
Longest Drive
Closest to Pin

Where: Evergreen Golf Club
Palm City, FL

Raffle: **Fabulous Prizes** including foursomes
at various local golf courses

Cost: \$90 per person (includes banquet)
\$20 to attend banquet only

As always, refreshments on the course are free!!

For more information, contact Pat Ferland at (772) 878-1700 or pferland@arcadis-us.com

Deadline for entries and banquet reservations: May 30, 2008



Professional Development Hours (PDHs)

Date	Event	Location	PDHs	Cost
May 8 & 9	2008 GMEC Conference	Walt Disney World	6.5 + Laws & Rules	\$275 FES/FICE Members
				\$375 Non-Members
				\$180 Government
				<i>After April 23 - \$50 late fee applies</i>
May 21 & 22	FICE/FDOT Consultant's Conference	Orlando	—	\$300 FICE Member Firms
				\$400 Non-Members
				<i>After May 1 - \$50 late fee applies</i>
June 13 & 14	FES Annual Leadership Conference	St. Augustine	—	\$275 FES Members
				\$375 Non-Members
				<i>After May 30 - \$50 late fee applies</i>

<http://www.fleng.org/seminars.cfm>



Please visit our new website!

<http://old.fleng.org/treasurecoast/>

**Send your comments and suggestions
about our website to
Jon-M@BoyleEngineering.com**

Questions or Comments?

If you have any questions/comments, or if you would like something included in the monthly publication, please contact Sean Donahue at SDonahue@IRCC.edu or by telephone at (772) 462-7823

2007 — 2008 Treasure Coast Chapter Board Members

Will B. Cornelius II, P.E., President (772) 878-0072 WCornelius@Ardaman.com
 Jonathan Murray, E.I., Vice President (772) 286-3883 Jon-M@BoyleEngineering.com
 E. Allen Bottorff II, P.E., Treasurer (772) 462-7823 EBottorff@IRCC.edu
 Sean Donahue, P.E., Secretary (772) 462-7823 SDonahue@IRCC.edu
 John Donahue, P.E., Regional Vice President (772) 286-3883 John-D@BoyleEngineering.com
 Marcos Montes De Oca, P.E., Past-President (863) 763-8999 Marcos-M@BoyleEngineering.com
 Patrick J. Ferland, P.E., State Director (772) 878-1700 Pferland@Arcadis-us.com

TREASURE COAST CHAPTER
 Chartered 1987
FLORIDA ENGINEERING SOCIETY
 Affiliated with
 NATIONAL SOCIETY OF PROFESSIONAL ENGINEERS
 P.O. BOX 8764, PORT ST. LUCIE, FL 34985

