

FOUNDED 1916



Florida  
Engineering  
Society

# BLACKLINES

*A Monthly Newsletter for Members of the  
Treasure Coast Chapter of the Florida Engineering Society*

Volume 22, Issue 3

March/April, 2007

## *A Word from the FES Treasure Coast President...*

### *Again?*

If you're wondering if you've had this morning's conversation before or if you had that feeling of déjà vu don't worry. Achieving excellence at the University of Florida is commonplace and the recurring National Championships did happen. Ok, I promise not to bring this up in any more president's messages; I am definitely not trying to push the Gator Nation on anyone. I am just proud to be from an institution that produces not only great engineers and professionals, but also athletes.

Speaking of excellence I would like to take this time to congratulate Will Cornelius and Joe Capra on their respective awards. Will Cornelius was the recipient of this year's FES Treasure Coast Chapter Young Engineer Award. Joe Capra was the proud recipient of the Engineer of the Year, typically referred to as the "Old Engineer Award" for our chapter. These are true leaders in our chapter and we are fortunate to be working with them. Thank you both for your service, not only to our society but our community.

E-Week Project –This year we have a project that requires the assistance of all of our members. If you missed the banquet, let me explain our project. John Hall's (FES State Past President) K-8 Initiative is to have engineers present to elementary and middle school students. For our chapter, to parallel this idea, we are going to do presentations and speaking engagements with every middle school in our chapter. The goals of this project are to teach young "would-be engineers" the importance of engineering, to promote engineering, and to open their minds to becoming engineers. With the school year winding down and only a couple of schools touched by this project, it will be a busy upcoming fall semester for us, and the Gators.

I look forward to working with each of you on this upcoming project and feel that this will not only promote the profession, but give today's youth a better understanding about the world in which they live.

Thank you all for taking the time to read this message and I look forward to you attending our next meeting, to be held on April 19, 2007. The meeting will be held at Manero's, located at 2851 Southwest High Meadows Avenue in Palm City.

**Marcos Montes De Oca, P.E.**

*FES Treasure Coast Chapter President*

*"Unofficial 25<sup>th</sup> member of the UF Gator National Championship Basketball Team"*

*P.S. I still have 4 years of NCAA eligibility. It could happen, right?*

## ***April Meeting at a Glance...***

**Who:** To be determined...

**What:** Treasure Coast Chapter's Scholarship Awards

**Where:** Manero's Restaurant

2851 SW High Meadows Avenue, Palm City, FL

**When:** April 19, 2007, 6:00 pm Cocktail Hour, 7:00 pm Dinner

**Cost:** \$40/person

**RSVP:** Heidi Henderson by April 17th at [HHenderson@Creechinc.com](mailto:HHenderson@Creechinc.com) or by calling (772) 283-1413.

## **FES E-mail Addresses**

Has your company or agency recently increased their e-mail spam filter? If yes, then you could be missing out on information from the Florida Engineering Society (FES). Be sure to add these FES e-mail address to your safe list.

- [enginews@fleng.org](mailto:enginews@fleng.org) – Add to receive the *FES EngiNews*, a bi-weekly electronic newsletter to keep you abreast of the latest society news, chapter tools, and industry information.
- [fes@fleng.org](mailto:fes@fleng.org) – Add to receive information about upcoming events.
- [seminars@fleng.org](mailto:seminars@fleng.org) – Add to receive the latest listing of continuing education programs and confirmation when registering for continuing education courses.
- [fice@fleng.org](mailto:fice@fleng.org) – Add to receive the *FICE Update*, a monthly publication for FICE member firms.



*This is not spam.*

Questions? Contact FES at 850-224-7121.

## ***FES Membership... Pass It Along***

FES has welcomed over 350 new members since August 1, 2006. Thank you for taking the time to pass the value of membership along to a colleague, friend, and business associates. The strength of membership begins at the chapter level.

Here are a couple of ways you can continue to pass the value of membership along:

- Invite a colleague to a chapter luncheon,
- Forward the latest edition of this chapter newsletter or *EngiNews*,
- Mentor a newly licensed Engineer Intern or Professional Engineer, and

Learn about the leadership roles at the chapter and state level by attending the FES Leadership Conference.

Membership information, applications, and tools are available at [www.fleng.org](http://www.fleng.org) or by contacting the FES Member Services Department 850-224-7121.



TREASURE COAST CHAPTER FLORIDA ENGINEERING SOCIETY

## 21st Annual Golf Tournament

SATURDAY, JUNE 16<sup>TH</sup>, 2007  
4 - Player Scramble

to Benefit:  
**MATHCOUNTS**  
**RAY WHITE MEMORIAL SCHOLARSHIP FUND**  
**PROJECT LEAD-THE-WAY**

- When:** Saturday, June 16, 2007  
8:00 am Shotgun Start  
(7:00 am Registration)
- Where:** Eagle Marsh Golf Club  
Jensen Beach, FL
- Cost:** \$85 per person (includes banquet)  
\$20 to attend banquet only
- Prizes:** 1<sup>st</sup>, 2<sup>nd</sup>, 3<sup>rd</sup> Place Low Net  
1<sup>st</sup> Place Low Gross  
Longest Drive  
Closest to Pin
- Raffle:** **Fabulous Prizes** including foursomes  
at various local golf courses

As always, **refreshments on the course are free!!**

For more information, contact Pat Ferland at 772.878-1700 or [pferland@arcadis-us.com](mailto:pferland@arcadis-us.com)  
**Deadline for entries and banquet reservations: June 13, 2007**



## ***SHELL OIL COMPANY AND FLORIDA ENGINEERING FOUNDATION TOP STATE MATHCOUNTS COMPETITION SPONSOR LIST AGAIN IN 2007***

In 2006, **Florida Engineering Foundation** increased its sponsorship amount significantly to reach an all-time high of \$6,000. The Florida Engineering Foundation's sponsorship includes funds to support training retreats for the winning Florida team to prepare for the national competition. In addition to this sponsorship, FEF has increased their monetary contribution to the *Coach of the Year* award recipient to \$500 and will now be awarding the coach of Florida's top team a cash award of \$500. The sponsorship and additional contributions coincide with the Foundation's Mission Statement "To promote and enhance engineering education in Florida in order to position our state as a technological leader in the global economy."

The Florida Engineering Society is also pleased to announce that **Shell Oil Company** has renewed their Geometry level sponsorships of the Florida MATHCOUNTS Competition! Shell's \$5,000 contribution to Florida's competition, as well as to four other state MATHCOUNTS competitions and the national competition, truly emphasizes the company's investment in today's youth and in the future of engineering.

*"Shell is pleased to support MATHCOUNTS. This program fits perfectly with Shell's strategy to support promising students as they pursue innovative projects with an underlying emphasis on math and science. Math and science skills are extremely important to many occupations at Shell. As the number of engineering and geosciences graduates diminishes, it becomes even more important to encourage students' to begin building their math and science skills at an early age",* said John Hofmeister, President, Shell Oil Company.

In addition, **Lockheed Martin** and **PBS&J** have each renewed their Algebra level sponsorships of Florida's MATHCOUNTS Competition, emphasizing their company's primary philanthropic mission to strengthen student ability and advance K-16 education, especially in math and science.

Lastly, FES thanks those companies who offer their support year after year. It is their dedication and generous contributions that enable us to administer such a program. Thank you to all of our 2007 sponsors:

### **Florida Engineering Foundation (\$6,000)**

#### **Geometry (\$5,000)**

**Shell Oil Company**

#### **Algebra (\$2,500)**

**PBS&J**

**Lockheed Martin**

#### **Arithmetic (\$1,000)**

**Collinsworth-Alter and A/E ProNet**

**Miller Legg**

**Figg Engineering Group**

**Publix Super Markets Charities**

**WilsonMiller**

### **Gulf Power Foundation, Inc. (\$500.00)**

#### **Contributing Sponsors**

**Peoples First Community Bank**

**Orlando Magic**

Florida MATHCOUNTS, a math competition for middle school students around the state, is the most productive and member-involved program that the Florida Engineering Society promotes. Twenty local chapters have competitions, with their winners going to Orlando for a statewide competition in March, which is conducted on the home court of the Orlando Magic at the Amway Arena. These Mathletes® receive star treatment and an introduction into engineering as a profession.

The Florida MATHCOUNTS Competition is set for March 29-30, 2007 at the Sheraton Downtown Hotel and the Amway Arena in Orlando. The competition will conclude with the traditional outing to Friday night's home game of the Orlando Magic vs. Indiana Pacers.

For more information on MATHCOUNTS, please call Dee Kring, CMP, Director of Member Events, at 850-224-7121.

## Keynoter Shares Treasure of Leadership at FES/FICE 91<sup>st</sup> Annual Summer Conference & Exposition



The Annual Conference Steering Committee, chaired by Pete Sheridan, PE, and Keith Jackson, PE, are pleased to announce the selection of a keynote speaker for the upcoming FES/FICE 91<sup>st</sup> Annual Summer Conference & Exposition. Themed “Discover the Treasure of Leadership” the conference will feature Captain Larry Brudnicki, the real-life Captain of the Coast Guard ship that performed two dramatic rescues during *The Perfect Storm*. Captain Brudnicki says that his experience with these rescues amount to only 100 hours of a 30-year career of assessing risks, making decisions and inspiring teamwork. Brudnicki is obviously a true leader and will share his “treasure of leadership” insight during the keynote presentation.

For centuries, sailors have ventured out to sea and lived through storms, and they will continue to do so for centuries to come. But, once every 100 years a storm comes along that is so big and so destructive compared to the rest that it is called the "Storm of the Century". Storms such as this present a crisis for some and an opportunity for others. But for all who experience it, it is something they will remember for a lifetime.

In late October of 1991 three separate storm systems collided off the coast of New England. A tropical storm named Grace developed from a low near Bermuda and started moving north. Simultaneously, a cold front associated with a high-pressure system was being propelled southeast from Canada by the Jet Stream. And a low-pressure system stalled near Sable Island, Nova Scotia in the direct path of the Canadian High and the Bermuda Low. The resulting combination formed a well-defined "eye" off the coast of New England, spanned 1500 miles, and moved in retrograde motion from the east to the west.

Even though it eventually qualified in all respects as a hurricane, the National Hurricane Center did not name it because it developed considerably north of the Caribbean's Hurricane Alley and its origin was remarkably unusual. So some people called it "The No Name Storm" and others referred to it as "The Halloween Storm". Because this storm was so big, so ferocious and so destructive that it could not have been any worse, one meteorologist described it as "The Perfect Storm" when Sebastian Junger was conducting research for his book.

Against the backdrop of his experience in "The Perfect Storm," Captain Brudnicki's presentation provides the perfect balance between inspiration and application. He will share the steps in action along with examples of the courage, leadership and teamwork that are necessary to triumph in our uncertain business climate. Through practical lessons learned from his experiences, Captain Brudnicki will share powerful tools to make the correct decisions even in the most difficult of circumstances.

**Mark your calendar now to be at the Marriott Marco Island Resort, August 2-4, 2007** to take part in this exciting annual event! In fact, be among the first to reserve your room at the Marco Island Marriott by calling reservations toll free at 800/438-4373. Please reference Florida Engineering Society to receive the discounted group rate of \$129 single or double occupancy. There is no resort fee and self parking is complimentary. Please note that the deadline to make your reservations and receive the discounted group rate is Tuesday, July 3<sup>rd</sup>; however, rooms may sell out prior to this deadline. Ensure you have a room by call the Marriott Marco Island today.

The Annual Conference Steering Committee is diligently working to prepare an agenda for you. Watch your mail, visit [www.fleng.org](http://www.fleng.org) or contact Dee Kring, CMP, FES Director of Member Events, at 850/224-7121 for more details.



# Mark Your Calendars



*April 13:*

FICE Professional Development Award Nomination Deadline

FPEG Professional Development Award Nomination Deadline

FPEG Government Engineer of the Year Nomination Deadline

FECON Professional Development Award Nomination Deadline

*April 19:*

FES-TC Monthly Chapter Meeting  
Manero's, Palm City, FL

*April 26-27:*

2007 GMEC Conference  
Hotel Royal Plaza, Orlando, FL

*May 6-9:*

ACEC 2007 Annual Convention & Legislative Summit

*May 7-10:*

FICE/FDOT Roadway Design Training Expo  
Doubletree Hotel at the Entrance to Universal,  
Orland, FL

*May 16:*

FICE/FDOT Roadway Advanced Project  
Traffic Forecasting  
Embassy Suites Orlando North, Orlando, FL

*May 23-24:*

2007 FICE/FDOT Consultants' Conference  
Airport Hyatt, Orlando, FL

*May 31-June 1:*

FES/FDEP Water Facilities SRF Workshop  
Hilton Walt Disney World, Orlando, FL

*June 16:*

2007 Annual FES-TC Golf Tournament  
Eagle Marsh Golf Club, Jensen Beach, FL

## TREASURE COAST CHAPTER COMMITTEE OPPORTUNITIES

**We still need volunteers** for many State Committees. Below is a list of the committees that are available. For details on a specific committee and an explanation of responsibilities, please see the FES website (<http://www.fleng.org/aboutfes.cfm>). If you are interested in volunteering for any of these committees, please contact Marcos Montes De Oca at 863-763-8999 or [marcos-ml@bfh.com](mailto:marcos-ml@bfh.com).

### Energy Committee

Study and make recommendations to the Commission on Legislative and Government Relations of the Florida Engineering Society with respect to energy matters affecting the public and the profession. Prepare studies and make recommendations to the Commission on energy policies or positions that would be appropriate for the Society to adopt and promote.

### Communications Advisory Committee

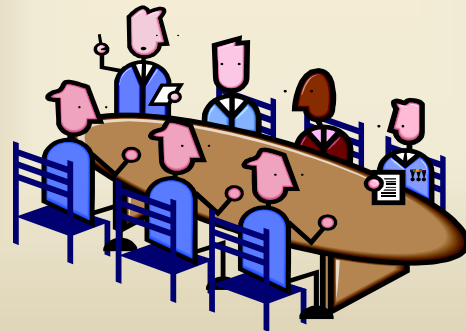
The objectives of this committee shall be to focus on opportunities for FES to improve its internal and external public relations efforts through effective use of communications.

### Charter and Bylaws Committee

Maintain a continuing study of the Society's Charter and Bylaws and make recommendations to the Board for revisions. Review proposed amendments to the Charter and Bylaws and make recommendations to the Board on the manner in which they shall be incorporated in the wordage of the Charter and Bylaws.

### Commission on Legislative & Government

The purpose of the commission is to provide the Florida Engineering Society with maximum participation in and proper coordination of its legislative and government relations program.



# CONTINUING EDUCATION NEWS



## FICE/FDOT ADVANCED PROJECT TRAFFIC FORECASTING COURSE 8 PDHs

**Who Should Attend?** - Engineers, Planners, and Designers responsible for traffic forecasts used in the design of projects on FDOT highways.

**Course Information** - This is a one-day course that teaches the techniques for developing project traffic forecasts. Participants will be instructed in the use of the Trends, 18K ESAL, and Turning Movement tools, and will work sample problems of each. The participants will learn how to import traffic data directly from the Florida Traffic Information DVD into these tools. Instructors will provide guidance on the proper selection of design criteria inputs to the forecasting tools, and will demonstrate their use in actual case examples.

The course also demonstrates the new Project Traffic Forecasting database that will be accessible through a website. Summary forecast data will be stored in a database, and PDF copies of the full reports will be stored online. This information will be available online as a reference for the engineers and planners developing project traffic forecasts on the same or similar highways.

**Requirements** - A prerequisite for this course is a completion certificate for the Basic Project Traffic Forecasting Course, which is available by clicking on the link below. Each participant needs to bring a laptop computer with a DVD drive and Windows 2003 or later OS.

### **Registration Fee**

\$375 FES/FICE Members and FDOT Employees

\$475 Non-member

**Questions** - Please call FICE Headquarters at 850-224-7121 or e-mail [seminars@fleng.org](mailto:seminars@fleng.org)

# CONTINUING EDUCATION NEWS

## Registration Now Open for FES/FDEP State Revolving Fund Workshop May 31-June 1

The Florida Engineering Society with the Florida Department of Environmental Protection is hosting the Water Facility State Revolving Fund (SRF) Workshop, May 31-June 1 at the Hilton Walt Disney World Resort in Orlando. Seats sell out fast, make your reservations today!

To download a complete brochure with agenda and to register online, please visit [http://www.fleng.org/seminars.cfm?event\\_id=286](http://www.fleng.org/seminars.cfm?event_id=286).

If you have any questions about this year's event, please contact Dee Kring, CMP, Director of Member Events, at 850-224-7121 or [dkring@fleng.org](mailto:dkring@fleng.org).

## *2007 FICE/FDOT Roadway Design Expo Date Announced*

MARK YOUR CALENDAR-The premier training for Roadway Design is coming to Orlando, May 7-10, 2007. The 2007 training expo will refresh your basic skills as well as develop new skills related to roadway design.

Each year, this popular training expo offers many courses for engineers (drainage, roadway, maintenance, design, etc) designers, technicians, and project managers responsible for the development, design and permitting of roadway design for FDOT projects.

Potential course offerings are:

- NHI-Geosynthetics
- NHI-Urban Drainage Design
- Elder Road User Program
- Highway Capacity Analysis
- Flexible Pavement Design
- Signal Capacity Analysis
- Storm Drain Design
- Pond Design

Please keep your eyes open for more information and mark the date on your calendar.

FICE welcomes your feedback and suggestions on upcoming course offerings at the 2007 Expo, please e-mail Julie Draper at [Julie@fleng.org](mailto:Julie@fleng.org) with this information.



# CONTINUING EDUCATION NEWS

## ***2007 FICE/FDOT Consultants' Conference***

Hyatt Regency Orlando Airport

May 23-24, 2007

*"The Challenges Ahead" featuring...*

### Keynote Speakers

Hank Fishkind, PhD, addressing the economic challenges

Karl J. Ahlrichs, challenging long-held maxims about recruitment and retention

As always...

### Relevant Discussion Topics

Public Private Partnership/Privatization

The Anatomy of a Transportation Project

Important Industry Updates

Mutual Gains – Progress Report

Legislative Update

DBE/MBE Progress Report

Valuable Networking Opportunities

## ***2007 GMEC Conference***

April 26-27, 2007

Hilton Orlando/Altamonte Springs

6 PDHs of technical engineering credit

This annual conference for geotechnical engineers has everything...

Technical reports and case studies

Dynamic Pile Testing

Use of Micro-piles to Underpin Drilled Shafts at the Tampa, Hillsborough County Expressway

Reversible Lane Project

Ground Vibrations

Port of Miami Tunnel Case Study

Current Research Projects at UF and UCF

Presentation of the prestigious 2007 GMEC Award plus

Professional Practice 101

The Essentials of Risk Management and Profitability for Project Managers

And Exhibits by YOUR equipment and service providers



# CLASSIFIEDS



## Project Engineers & Project Managers

**LBFH, Inc.** leverages the skills and experience of all employees and offers an environment that fosters individual growth and rewards performance. You'll be working for an award-winning company with an impressive track record. This is an amazing opportunity to join LBFH, Inc. and gain experience as a Project Engineer, Team Leader or Project Manager.

### Qualifications:

- Minimum of 6+ years progressive civil engineering experience in Land Development, Water Resources or Water and Wastewater.
- BS or Master's degree in engineering from an A.B.E.T accredited college or university.
- Professional Engineering License required (preferably registered in Florida).
- 3+ years experience supervising/managing a team of engineers and techs (for Team Lead and Project Manager positions).

Demonstrated successful performance in dealing with all levels and internal and external business clients.

LBFH, Inc. provides Civil Engineering, Survey/Mapping & GIS services to private and government clients. Our corporate office is located in Palm City, Florida with branch offices in West Palm Beach, Ft. Pierce, Okeechobee, Ft. Myers and Or-



### Responsibilities include:

Design, permitting and production of civil engineering plans and construction documents as well as close coordination with client representatives.

Supervision of CAD technicians and EIT's

### Position Requirements:

Excellent communication and organizational skills. PE is not required but candidates must be eligible for Florida registration.

### Benefits:

Group health and dental insurance. Company-paid life insurance, short and long term disability insurance plan.

401(k) retirement plan with employer match.

Salary commensurate with experience.

Tuition Reimbursement Program.

Continuous professional learning environment.

Join our award-winning team and great work environment with career advancement opportunities.

### Resumes:

Please email to [hr@creechinc.com](mailto:hr@creechinc.com) or Fax: (772) 283-8104. For a confidential interview, please contact Mary Correia at (772) 283-1413. Please visit our website at [www.creechinc.com](http://www.creechinc.com) for more positions available



# CLASSIFIEDS



Our dynamic team is seeking exceptionally talented candidates for the following positions in our St. Lucie office:

**ENGINEER III**  
Civil engineer with FL PE needed w/ land development design exp to manage projects and build client base in St Lucie. Familiarity w/ local agencies desired.

**ENGINEER I**  
1+ years experience with land dev & government design projects. AutoCAD a must.

**TRAFFIC ENGINEER I**  
0-2 yrs transportation engineering exp w/ signal design , traffic impact studies, parking utilization etc. AutoCAD and/or Microstation desirable.

**Miller Legg**, is celebrating 40 years of providing outstanding professional services in Florida and our dynamic company is always looking for energetic professionals to join our Team.

Visit [www.millerlegg.com](http://www.millerlegg.com) to learn more about our St. Lucie, Orlando, Pembroke Pines, Ft. Lauderdale & West Palm Beach offices.

Please forward your résumé to:

**Miller Legg**  
Attn: Human Resources  
749 SE Port St. Lucie Blvd.  
Port St. Lucie, 34984  
**Email:** HR@millerlegg.com  
**Fax:** 407-629-7883



Leading National Consulting Firm expanding land development operations in West Palm Beach, Port St. Lucie, and Vero. Positions available:

Entry Level Engineering Graduates  
Project Engineers and Designers  
Project Managers

Fax Résumé to Arcadis:  
West Palm Beach – (561) 684-1812  
Port St. Lucie & Vero – (772) 878-1802  
EOE Employer



# CLASSIFIEDS

**We believe.**  
A pencil in the right person's hand  
can make the world a better place to live.

**MSCW**  
www.MSCWinc.com  
Orlando Headquarters  
877 672 9788

At MSCW we are a team of talented individuals with diverse skills. We are a group of professionals with unique visions but common goals. And we are looking for other individuals to join our team – people with vision, people with passion, people who want to help us change the world we live in.

We are currently seeking to fill multiple openings in our Stuart office, including the positions of staff and project engineers, project managers and all levels of planner/designers. MSCW offers a generous compensation and benefits package, including health, dental, vision, life and disability coverage, 401(k) retirement benefits and ample paid time off.

To learn more about current openings at MSCW – formerly Miller Sellen Conner & Walsh – visit our new website at [www.MSCWinc.com](http://www.MSCWinc.com).

Civil Engineer needed with experience in design and preparation of land development projects and surface water management design and permitting. BSCE with PE or ability to obtain within 1 year preferred. Salary commensurate with experience and qualifications.

This position is with a growing Engineering Firm with offices in Fort Pierce and Okeechobee, FL.

Interested parties, please forward resumes to:

Shanda Walker  
210 NW Park Street, Suite 204  
Okeechobee, FL 34974  
Phone: 863-467-0076  
Fax: 863-467-0091



# CLASSIFIEDS



## Engineering & Water Resources, Inc.

7881 SW Ellipse Way, Stuart, Florida 34997 • 772-781-6408 • Fax: 772-781-6409 •  
[www.ewr1.com](http://www.ewr1.com)

Engineering & Water Resources, Inc. (EWR) currently has the following openings:

Professional Engineer with strong land development design and permitting background

Graduate Engineer with a BS or Master's degree in engineering from an A.B.E.T accredited college or university, preferably with an E.I. classification

Agricultural Engineer with experience in agricultural nutrient management plans and storm water management systems.

EWR is a young, aggressive and growing multidisciplinary consulting firm (visit our web site at [ewr1.com](http://ewr1.com)). We provide an excellent benefit program, including full family medical paid by the company, life insurance, cafeteria plan, 401K, paid time off, and competitive compensation. Send your resume to Melissa Corbett, P.E. at [melissac@ewr1.com](mailto:melissac@ewr1.com) or fax to 772-781-6409.



## Be A Part Of It!

Martin County not only recognizes their employees, but also rewards them for their efforts. We offer an excellent benefit package, competitive wages and the chance to do great work with great people!

### Project Engineer

Martin County Board of County Commissioners is seeking a energetic and devoted professional to perform managerial and administrative duties assisting the Department Director or designee with various complex engineering projects. The perfect candidate should be have considerable independent judgment and initiative in carrying out the daily operations of this section. For a detailed job description and application, please visit our website at [www.martin.fl.us](http://www.martin.fl.us) and click on the job opportunities page.

Martin County Board of County Commissioners  
2401 SE Monterey Road  
Stuart, FL 34996  
772-221-2363



# CLASSIFIEDS



## Stormwater Engineer

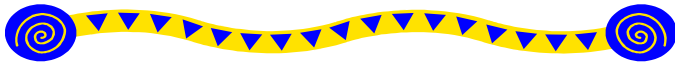
The City of Fort Pierce is seeking a responsible technical and administrative position under the direction of the Engineering Stormwater Supervisor in the designing, constructing, inspecting, and monitoring of the City's stormwater projects including stormwater management compliance of private site development and City public works projects as required. All work is done with limited direction and training by the Stormwater Supervising Engineer. The position requires technical judgment and field decision. PE licensure required. For more information please contact:

Human Resource  
City of Fort Pierce  
P.O. Box 1480  
772-221-2363

## Classifieds



Did you know that the Treasure Coast Chapter will publish POSITIONS WANTED and HELP WANTED notices for its members at no cost?! Please email your advertisements to Jon Murray, E.I. at [Jon-M@LBFH.com](mailto:Jon-M@LBFH.com)



## Quote of the Month

*“A good scientist is a person with original ideas. A good engineer is a person who makes a design that works with as few original ideas as possible.”*

**Freeman Dyson**

*American Physicist and Mathematician*



## Membership News

*Are you getting back for giving back to FES?*

This year reward yourself with FREE incentive prizes from FES. Each time you give back to FES through a new member sponsorship, you will receive a prize. Prizes vary from FES Bucks (to use like cash at FES events), to free membership dues at the state and national level, to a top prize of a two night stay at the Marco Island Marriott. A complete list of membership incentive prizes is available at [www.fleng.org](http://www.fleng.org) along with the FES membership application. For additional information about sponsoring new members, contact Kate Robinson Ray, Director of Membership Recruitment at 850-224-7121 or [KRay@fleng.org](mailto:KRay@fleng.org).

## Questions or Comments?

If you have any questions/comments, or if you would like something included in the monthly publication, please feel free to contact Jon Murray, E.I. at [Jon-M@LBFH.com](mailto:Jon-M@LBFH.com) or by telephone at (772) 286-3883

**For Members Only** - If you would like a link to your company's web page added to our web site, please e-mail Jon Murray, E.I. at [Jon-M@LBFH.com](mailto:Jon-M@LBFH.com) or call (772) 286-3883.

### **2006 - 2007 Treasure Coast Chapter Board Members**

Marcos Montes De Oca, P.E., President (863) 763-8999 [Marcos-M@LBFH.com](mailto:Marcos-M@LBFH.com)  
Heidi Henderson, E.I., Vice President (772) 283-1413 [HHenderson@Creechinc.com](mailto:HHenderson@Creechinc.com)  
Will Cornelius, E.I., Treasurer (772) 878-0072 [WCornelius@Ardaman.com](mailto:WCornelius@Ardaman.com)  
Jonathan Murray, E.I., Secretary (772) 286-3883 [Jon-M@LBFH.com](mailto:Jon-M@LBFH.com)  
John Donahue, P.E., Regional Vice President (772) 461-2450 [John-D@LBFH.com](mailto:John-D@LBFH.com)  
Chad Rucks, P.E., Past-President (863) 763-8999 [Chad-R@LBFH.com](mailto:Chad-R@LBFH.com)  
Patrick J. Ferland, P.E., State Director (772) 878-1700 [Pferland@arcadis-us.com](mailto:Pferland@arcadis-us.com)

#### **TREASURE COAST CHAPTER**

Chartered 1987

#### **FLORIDA ENGINEERING SOCIETY**

Affiliated with

**NATIONAL SOCIETY OF PROFESSIONAL ENGINEERS**

**P.O. BOX 8764, PORT ST. LUCIE, FL 34985**

