



PRESIDENT'S MESSAGE

Chad O. Rucks, P.E.

It is hard to believe that it is already March. The first few months of 2006 have been very exciting times for the Treasure Coast Chapter. We had a very successful chapter sporting clay outing in Highlands County and raised about \$1,000 for both MathCounts and our local scholarships. I want to thank all of you that either attended or contributed to this annual event, which seems to get better every year.

Also I want to congratulate David Andre, P.E. and Allen Bottorff, P.E. for being selected as our chapter's Engineer of the Year and Young Engineer of the Year. It was an honor to see both of these individuals receive their respective awards. They truly exemplify the engineering profession in our area.

Congratulations David and Allen!

Calendar of Events for Upcoming Months



March 28 - 30	Florida Engineering Leadership Institute (Tallahassee)
March 29	FES Board of Directors Meeting (Tallahassee)
March 29 - 30	Professional Engineers' Legislative Days (Tallahassee)
March 30	Treasure Coast Chapter Meeting (Finz Waterfront Grille)
March 31	MATHCOUNTS State Competition (Orlando)
April 6 - 7	GMEC Conference (Altamonte Springs)
June 2 - 3	FES Leadership Conference (Hutchinson Island)

March Meeting at a Glance...

Who: TBA

What: TBA

Where: Finz Waterfront Grille

When: March 30, 2006
Cocktail Hour 6:00 pm
Dinner 7:00 pm

Cost: \$35.00/Person

RSVP: Marcos Montes De Oca by March 27th at marcos-m@lbfh.com or by calling (863) 763-8999.

Congratulations!

One of our Treasure Coast FES Chapter Members successfully passed the most recent Professional Engineering Examination, and are now officially Professional Engineers:

Marcos Montes De Oca, P.E – LBFH, Inc.

Way To Go Marcos!



TREASURE COAST CHAPTER COMMITTEE OPPORTUNITIES

We still need volunteers for many State Committees. Below is a list of the committees that are available. For details on a specific committee and an explanation of responsibilities, please see the FES website (<http://www.fleng.org/aboutfes.cfm>). If you are interested in volunteering for any of these committees, please contact Chad Rucks at 863-763-8999 or Chad-R@LBFH.com.

Energy Committee

Study and make recommendations to the Commission on Legislative and Government Relations of the Florida Engineering Society with respect to energy matters affecting the public and the profession. Prepare studies and make recommendations to the Commission on energy policies or positions that would be appropriate for the Society to adopt and promote.

Communications Advisory Committee

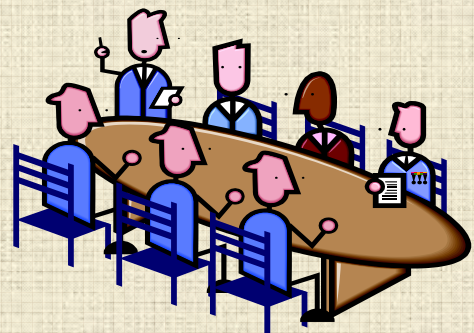
The objectives of this committee shall be to focus on opportunities for FES to improve its internal and external public relations efforts through effective use of communications.

Charter and Bylaws Committee

Maintain a continuing study of the Society's Charter and Bylaws and make recommendations to the Board for revisions. Review proposed amendments to the Charter and Bylaws and make recommendations to the Board on the manner in which they shall be incorporated in the wordage of the Charter and Bylaws.

Commission on Legislative & Government

The purpose of the commission is to provide the Florida Engineering Society with maximum participation in and proper coordination of its legislative and government relations program.



MATHCOUNTS®

Call For State Competition Volunteers

FES' Chapter MATHCOUNTS Competitions are coming soon and preparations are being made for the 2006 MATHCOUNTS State Competition in Orlando, Florida March 30-31.

We need your help! Volunteers are essential to our competition. Please consider adding your name to our list of volunteers. Be there when hundreds of Mathletes® take center stage at this year's annual event being held at the Ivanhoe Plaza Hotel and TD Waterhouse Centre. Also, the Mathletes® and volunteers will enjoy the Orlando Magic game vs. Dallas Mavericks on Friday, March 31.

For more information on MATHCOUNTS or how you can volunteer, please contact Julie Draper, Member Events Coordinator, at (850) 224-7121 or Julie@fleng.org

Florida MATHCOUNTS Receives Increased Funding for 2006 State Competition

Florida Engineering Foundation has increased its sponsorship amount significantly to reach an all-time high of \$6,000. The Florida Engineering Foundation's sponsorship includes funds to support training retreats for the winning Florida team to prepare for the national competition. This sponsorship coincides with the Foundation's Mission Statement "To promote and enhance engineering education in Florida in order to position our state as a technological leader in the global economy."

The Florida Engineering Society is also pleased to announce that **Shell Oil Company** has signed on as the first Geometry level sponsor of the Florida MATHCOUNTS Competition! Shell's \$5,000 contribution to Florida's competition, as well as to four other state MATHCOUNTS competitions and the national competition, truly emphasizes the company's investment in today's youth and in the future of engineering.

In addition, **Lockheed Martin** has signed on as a sponsor of Florida's MATHCOUNTS Competition at the Algebra level! Lockheed Martin's \$2,500 contribution to Florida, as well as their title sponsorship of the MATHCOUNTS National Competition, emphasizes the company's primary philanthropic mission to strengthen student ability and advance K-16 education, especially in math and science.

Last but not least, FES thanks those companies who offer their support year after year. It is their dedication and generous contributions that enable us to administer such a program. Thank you to all of our 2006 sponsors:

Florida Engineering Foundation (\$6,000)

Geometry (\$5,000)
Shell Oil Company

Algebra (\$2,500)
PBS&J
Lockheed Martin

Arithmetic (\$1,000)

Collinsworth-Alter and A/E ProNet
Miller Legg
Figg Engineering Group
Publix Super Markets Charities
WilsonMiller

Contributing Sponsors

Gulf Power Foundation, Inc. \$500.00
Peoples First Community Bank
Orlando Magic

For more information on MATHCOUNTS, please call Dee Kring, CMP, Director of Member Events, at (850) 224-7121.

CONTINUING EDUCATION NEWS

HOW OLD IS YOUR ADVANCED WZTC WALLET CARD?

Work Zone Refresher Course

April 27, 2006

Embassy Suites-Ft. Lauderdale

The Florida Department of Transportation requires that the Advanced Work Zone Traffic Control Certification be renewed every fourth year with a one-day refresher course. Be the first to register for this popular course. 6 PDH's

Registration Fees:

\$275 FES/FICE Members

\$375 Non-Members

For more information, visit www.fleng.org or contact Julie Draper, Member Events Coordinator, at 850-224-7121 or Julie@fleng.org.

2006 FICE/FDOT Roadway Design Training Expo

May 2-4, 2006

The Rosen Centre Hotel, Orlando, FL

FICE is pleased to announce the 2006 FICE/FDOT Roadway Design Training Exposition, May 2-4, 2006 at The Rosen Centre Hotel in Orlando, FL. A total of ten courses will be offered at the three day training session. Courses are priced individually and will fill up quickly. Register today at www.fleng.org.

The Rosen Centre Hotel is offering the rate of \$99.00 a night for Roadway Design Expo participants. The conference rate is available through April 1, 2006. Please contact the hotel directly at 800-204-7234 and reference Florida Institute of Consulting Engineers/Roadway Design Training Exposition.

If you have questions regarding the Roadway Design Expo, please contact Kate Ray, Director of Member Services at 850-224-7121.

The FES Treasure Coast Chapter Website has been updated!!

Please visit <http://old.fleng.org/treasurecoast/> for Chapter news and information, photos from previous Chapter events, and the "Member's Ride of the Month". Please contact Marcos Montes De Oca, PE at Marcos-M@lbfh.com to contribute to our website.



CLASSIFIEDS



Project Engineers & Project Managers

LBFH, Inc. leverages the skills and experience of all employees and offers an environment that fosters individual growth and rewards performance. You'll be working for an award-winning company with an impressive track record. This is an amazing opportunity to join LBFH, Inc. and gain experience as a Project Engineer, Team Leader or Project Manager.

Qualifications:

- Minimum of 6+ years progressive civil engineering experience in Land Development, Water Resources or Water and Wastewater.
- BS or Master's degree in engineering from an A.B.E.T accredited college or university.
- Professional Engineering License required (preferably registered in Florida).
- 3+ years experience supervising/managing a team of engineers and techs (for Team Lead and Project Manager positions).
- Demonstrated successful performance in dealing with all levels and internal and external business clients.

LBFH, Inc. provides Civil Engineering, Survey/Mapping & GIS services to private and government clients. Our corporate office is located in Palm City, Florida with branch offices in West Palm Beach, Ft. Pierce, Okeechobee, Ft. Myers and Orlando. We offer competitive salaries and an excellent benefits package including health insurance, 401(k), Paid Time Off and flexible schedules. Please submit resumes with salary expectations to careers@lbfh.com or visit our website at www.lbfh.com for more information.



Civil Engineers

Creech Engineers, Inc. has an immediate opening for Civil Engineers with 5+ years experience in our Land Development group located in our Jensen Beach and Jupiter, Florida offices.

Responsibilities include:

- Design, permitting and production of civil engineering plans and construction documents as well as close coordination with client representatives.
- Supervision of CAD technicians and EIT's

Position Requirements:

- Excellent communication and organizational skills. PE is not required but candidates must be eligible for Florida registration.

Benefits:

- Group health and dental insurance. Company-paid life insurance, short and long term disability insurance plan.
- 401(k) retirement plan with employer match.
- Salary commensurate with experience.
- Tuition Reimbursement Program.
- Continuous professional learning environment.
- Join our award-winning team and great work environment with career advancement opportunities.

Resumes:

Please email to hr@creechinc.com or Fax: (772) 283-8104. For a confidential interview, please contact Mary Correia at (772) 283-1413. Please visit our website at www.creechinc.com for more positions available



CLASSIFIEDS



Our dynamic team is seeking exceptionally talented candidates for the following positions in our St. Lucie office:

ENGINEER III

Civil engineer with FL PE needed w/ land development design exp to manage projects and build client base in St Lucie. Familiarity w/ local agencies desired.

ENGINEER I

1+ years experience with land dev & government design projects. AutoCAD a must.

TRAFFIC ENGINEER I

0-2 yrs transportation engineering exp w/ signal design , traffic impact studies, parking utilization etc. AutoCAD and/or Microstation desirable.

Miller Legg, is celebrating 40 years of providing outstanding professional services in Florida and our dynamic company is always looking for energetic professionals to join our Team.

Visit www.millerlegg.com to learn more about our St. Lucie, Orlando, Pembroke Pines, Ft. Lauderdale & West Palm Beach offices.

Please forward your résumé to:

Miller Legg

Attn: Human Resources
749 SE Port St. Lucie Blvd.
Port St. Lucie, 34984

Email: HR@millerlegg.com

Fax: 407-629-7883



Leading National Consulting Firm expanding land development operations in West Palm Beach, Port St. Lucie, and Vero. Positions available:

- Survey Party Chiefs
- Survey Instrument
- Survey and Engineering CADD Technicians
- Entry Level Engineering Graduates
- Project Engineers and Designers
- Project Managers

Fax Résumé to Arcadis:

West Palm Beach – (561) 684-1812

Port St. Lucie & Vero – (772) 878-1802

EOE Employer

Membership News

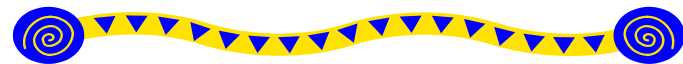
Are you getting back for giving back to FES?

This year reward yourself with FREE incentive prizes from FES. Each time you give back to FES through a new member sponsorship, you will receive a prize. Prizes vary from FES Bucks (to use like cash at FES events), to free membership dues at the state and national level, to a top prize of a two night stay at the Marco Island Marriott. A complete list of membership incentive prizes is available at www.fleng.org along with the FES membership application. For additional information about sponsoring new members, contact Kate Robinson Ray, Director of Membership Recruitment at 850-224-7121 or KRay@fleng.org.



Quote of the Month

A computer lets you make more mistakes faster than any invention in human history, with the possible exceptions of handguns and tequila.

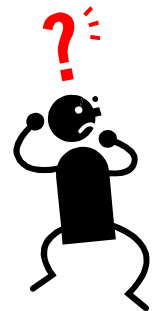


For Members Only - If you would like a link to your company's web page added to our web site, please e-mail Will Cornelius, E.I. at WCornelius@Ardaman.com or call (772) 878-0072.

Classifieds



Did you know that the Treasure Coast Chapter will publish POSITIONS WANTED and HELP WANTED notices for its members at no cost?! Please email your advertisements to Will Cornelius, E.I. at WCornelius@Ardaman.com



Questions or Comments?

If you have any questions/comments, or if you would like something included in the monthly publication, please feel free to contact Will Cornelius, E.I. at WCornelius@Ardaman.com, or by telephone at (772) 878-0072

2005 - 2006 Treasure Coast Chapter Board Members

Chad Rucks, P.E., President (863) 763-8999 Chad-R@LBFH.com
Marcos Montes De Oca, P.E., Vice President (863) 763-8999 Marcos-M@LBFH.com
Heidi Henderson, E.I., Treasurer (772) 283-1413 HHenderson@Creechinc.com
Will Cornelius, E.I., Secretary (772) 878-0072 WCornelius@Ardaman.com
John Donahue, P.E., Regional Vice President (772) 461-2450 John-D@LBFH.com
David Andre, P.E., Past-President (772) 807-9191 DAndre@aaceinc.com
Patrick J. Ferland, P.E., State Director (772) 878-1700 Pferland@arcadis-us.com



TREASURE COAST CHAPTER
Chartered 1987
FLORIDA ENGINEERING SOCIETY
Affiliated with

NATIONAL SOCIETY OF PROFESSIONAL ENGINEERS
P.O. BOX 8764, PORT ST. LUCIE, FL 34985

