

BLACKLINES

A Monthly Newsletter for Members of the Florida Engineering Society

Volume 17, Issue 7

July 2003

President's Message

Kelly Cranford, P.E.
Treasure Coast Chapter President
South Florida Water Management District

Last June, your 2002-2003 board set two primary goals for the chapter: 1) to become more involved in the local community and 2) to have chapter members more involved at the state level of FES.

Over the past year, our chapter has joined the Rivers Coalition and our E-Week project this year involved working with the Rivers Coalition and the St. Lucie River Initiative. We designed, constructed, and installed a sediment trap that will collect samples of the material that has been building up in our area rivers.

Also during the past year, Lisa A. Wichser, P.E. was elected as the Region V vice-president; Melissa G. Corbett, P.E. was named as a co-recipient as FES Young Engineer of the Year; Patrick L. Ferland, P.E. now serves as the secretary for Florida Engineers in Industry; Michael T. Hermesmyer, P.E. continues to serve on the FICE Board of Directors and next year will be installed as the Treasurer of the Board.

For the goals of the 2003-2004 Treasure Coast Chapter Board ... stay tuned until next month.

Please join me in congratulating our newest board member – Chad Rucks, E.I. If you have words of wisdom you would like to share with Chad or would like to add your congratulations, he/she can be reached at Chad-R@lbfh.com or (863) 763-8999. ♦



CALENDAR OF EVENTS

CHAPTER BOARD MEETING
TBA

TREASURE COAST CHAPTER ANNUAL MEETING
CLUB MED – JULY 17TH, 6: 45 PM

FES ANNUAL SUMMER CONFERENCE AND EXPO
FT. LAUDERDALE – AUGUST 7 – 9

INSIDE THIS ISSUE

- 2 July Meeting – Treasure Coast Chapter Annual Meeting
- 2 Incoming President's Message
- 2 1st Place ACE Award Winner : Treasure Coast Chapter
- 2 Request for E-Week chair
- 2 Golf Tournament Results
- 3 Treasure Coast Wildlife Hospital
- 3 Indian River Lagoon letter writing campaign
- 4 New MATHCOUNTS Banner Donated

2003-2004 Treasure Coast Chapter Florida Engineering Society Board

President	Melissa Corbett, P.E.	Engineering & Water Resources
Vice President	David Andre, P.E	Ardaman & Associates
Treasurer	Teri Andre, P.E.,	Miller, Sellen, Conner & Walsh
Secretary	Chad Rucks, E.I.	LBFH, Inc.
Past President	Kelly Cranford, P.E.	SFWMD

In-Coming President's Message

Melissa Corbett, P.E.
In-Coming Treasure Coast Chapter President
Engineering & Water Resources

I'd like to thank Kelly Cranford for her dedication to the Treasure Coast Chapter of FES. Over the past four years that we have been on the Board together, Kelly has been the served as momentum for our Chapter. She has dedicated an incredible amount of time and energy for our Chapter.

One of Kelly's goals from last year was to increase our members involved in the community, as well as getting more of our local engineers involved in our chapter. The community involvement serves two purposes. One purpose is to give our professional members an outlet to make a difference in the community and the second is to allow the community to see, know and learn about Engineers. Our community involvement includes the nationally recognized MathCounts competition between middle school students, high school scholarships, Project Lead-the-Way, last year we joined the Rivers Coalition, and our Engineer's Week project this year was construction of a sediment trap for the St. Lucie River Initiative.

I would like to continue this goal of involvement in two ways: Hosting a larger scale fishing tournament as an additional fund-raising mechanism and by asking for volunteers to help the Treasure Coast Wildlife Hospital.

You probably see a bit of a trend here with the animal / nature projects and involvement. Since I will serve as our Chapter's President over the next year, I'd like to let you know something about myself. I grew up outside of Philadelphia, Pennsylvania, and went on the college for a degree in Graphic Arts. After deciding that I could no longer handle the snow, I moved to Florida and got a job as a Graphic Artist. After several years of working at local newspapers, I figured out that you can't make much money as a Graphic Artist unless you live in New York ~ and I wasn't going back to the snow, so I went back to school to get a degree in Marine Biology. After some research, I figured out that there just aren't many [Jacques Cousteau](#) positions out there. After several major changes, I graduated from the University of Central Florida with a Bachelor degree in Civil Engineering. My husband and I live in Hobe Sound with a "zoo" of animals. If you ever see my house, you'll wonder why I didn't get a degree in veterinary medicine! I do have a love of nature and the environment, so I tend to look for community involvement that focuses around outdoors.

I look forward to working with you this year to increase our community exposure and enhance our profession's image. ♦

July Chapter Meeting

David Andre, P.E.
Treasure Coast Chapter Vice-President
Ardaman & Associates

Our July meeting will be the Treasure Coast Chapter Annual Meeting. Shannon LaRocque will install our new officers on Thursday, July 17th at Club Med. The meeting will begin at 6:45 pm.

Please RSVP to Dave by Friday, July 11th at either (772) 878-0072 or Our July meeting will be the Treasure Coast Chapter Annual Meeting. Shannon LaRocque will install our new officers on Thursday, July 17th at Club Med. The meeting will begin at 6:45 pm and the cost for the all-you-can eat buffet (including beer and wine) is \$25/person.

If you have not all ready RSVP'd, call Dave at either (772) 878-0072 or dandre@ardaman.com to see if space is still available. No Shows will be invoiced. ♦



Treasure Coast Chapter wins 1st Place in the ACE Awards

Melissa Corbett, P.E.
In-Coming Treasure Coast Chapter President
Engineering & Water Resources

The Board is thrilled to announce that we have won first place in this year's ACE Awards for Project Lead the Way! Our Chapter will be recognized at the Awards Breakfast at the Annual Meeting in Fort Lauderdale on Saturday, August 9. Many thanks to all of our members who have donated literally hundreds of hours to this wonderful program, and to David and Teri Andre who put the application together. ♦

E-Week Committee Needed

Kelly Cranford, P.E.
Treasure Coast Chapter President
South Florida Water Management District

Are you looking for an opportunity to become more involved in the Treasure Coast Chapter? Volunteer to be come a member – or chair – of our newly formed E-Week Committee. This committee will be responsible for planning and coordinating our E-Week activities including our traditional project and banquet. For more information or to volunteer, contact Melissa Corbett at (772) 781-6408 or melissac@ewr1.com ♦

Email Addresses Wanted!

If you received this email via U.S. mail, or snail mail, please email Melissa Corbett at melissac@ewr1.com to get on the official email list and see this newsletter in color!

Your email address will never be given out to anyone, and those who receive the newsletter will not see anyone else's email addresses. Email helps reduce the costs associated with producing and sending the newsletter. The newsletter will still be mailed out to those members who are not on the email list.

Treasure Coast Wildlife Hospital

Melissa Corbett, P.E.
In-Coming Treasure Coast Chapter President
Engineering & Water Resources.

I am sure most of you have read the articles in the paper lately regarding the Treasure Coast Wildlife Hospital's move from Hobe Sound to Palm City, but for those of you who don't know, the Hospital is facing eviction from its current location on Bridge Road. The owner of the Bridge Road property, is suing the Hospital for eviction, trespassing and for hindering their ability to use the property after negotiations for a lease fell apart.

Thanks to the Martin County Audubon Society, which officially gave them the deed to 20 acres in western Palm City, the Hospital has a new place to call home, but their relocation is a long way off. And they are in need of help.

The Treasure Coast Chapter of FES and the Indian River Chapter of the Florida Surveying and Mapping Society has decided to team up to help facilitate the site plan approval. We are looking for volunteers to help with surveying, site planning, preparing drainage plans and calculations, SFWMD permitting, and Martin County approval.

To volunteer, please contact Melissa Corbett at 781-6408 or melissac@ewr1.com. ♦



CHECK OUT OUR WEBSITE!
<http://old.fleng.org/treasurecoast/>

Indian River Lagoon in Need of Help

Melissa Corbett, P.E.
In-Coming Treasure Coast Chapter President
Engineering & Water Resources.

This year, our Chapter joined the Rivers Coalition, represents over 100,000 individuals and is made up of economic, environmental and civic organizations, all of which are concerned about the health and well-being of the St. Lucie and Indian Rivers. The Rivers Coalition formed in the spring of 1998 as a result of the harm caused by the huge fresh water discharges from Lake Okeechobee.

Last month, the Coalition asked its' member organizations to send letters to President Bush, Governor Bush, and members of Congress urging the IRL approval and funding in 2004. At our last Board meeting, we agreed to send letters from local (Treasure Coast Chapter) level, to be signed by Lisa Wichser, our Regional Vice President, and from the state level, to be signed by President John B. Zumwalt and Incoming President Shannon LaRocque. We are also encouraging our Chapter members to send letters on their firms' letterhead. Copies of the letters sent by Leon Abood, Chairman of the Rivers Coalition are available on our webpage or by contacting Melissa Corbett. Please do not send the exact same letter, as mass mailing of identical letters do not have the same affect as a large number of individual letters, all supporting the same issue.

For additional information, please contact Melissa Corbett at 781-6408 or melissac@ewr1.com. ♦



FES Executive Committee Report

Lisa Wichser, P.E.
Region V Vice-President
LBFH, Inc.

At the last FES Executive Committee Meeting (July 9), we agreed to present several items to the Board, at the Annual Meeting, for final approval.

The new FES Organizational Structure and an Amended Board Agenda to the Board at its Annual Meeting were the most notable agreements. The new structure will be aligned to give more focus to governmental affairs, technical professionals, community professionals and "grass-roots" chapters, and professional practice sections. The new agenda will align accordingly.

The Governmental Affairs, Commission, CEQ, and CEC Committees (through the Executive Director and the President), will focus on governmental affairs.

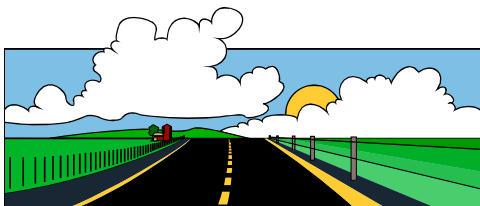
The Annual Meeting, Leadership Advisory, Membership, Scholarship, MathCounts, Communications Advisory, Awards, Student Chapters, Professional Development, and Student Professional Development Committees (through the President-Elect), will focus on technical professional issues.

The Chapter State Directors, Chapter Presidents, Regional Vice Presidents, and the Leadership Institute Committee (through the President), will focus on community professionals and "grass-roots" chapter issues.

The Ethical Practices, Professional Concerns, Charter & Bylaws, Nominating, Budget, and Engineering Alliance Committees, together with FICE, FPEG, FPEC, FPEE, FPEI, (through the Past-President) will focus on professional practice issues.

The ExCom also agreed to recommend to the Board, at the Annual Meeting, that the dues statement be revised to encourage membership and participation in FEPAC and the FEF. If approved by the Board, the changes will be reflected in the dues statements received by the members this fall.

The ExCom also agreed to recommend to the Board, at the Annual Meeting, the initiative of a year-long Leadership Development Program for professional engineers and other design-related professionals in conjunction with FICE. This program is intended to develop leadership as community professionals (FES) and leadership in emerging company principals (FICE). ♦



MATHCOUNTS Banner Donated *Georgia to the Rescue!*

After many years of struggling to hang our old, dry rotted **MATHCOUNTS** banner at our local competition, Steven J. Doyle, PE (Indian River County Utilities) offered to take the lead and have a new banner created. Steve asked co-worker Ann Powell to assist in scouting out sources for a new **MATHCOUNTS** banner, Ann immediately called her niece in Georgia! Christina not only agreed to fabricate the new banner, but also donated it to FES. It was personally delivered just a few days later.

Please take a few moments during your working days to send a Thank You e-mail to Ann, Ashley and Christina for their contribution. Ann: apowell@ircgov.com and Christina Denney: denneydesigns@aol.com.



(Left to right) Ann Powell, Vero Beach, FL, Ann's great niece, Ashley Denney, and her niece, Christina Denney, both from Canton, Georgia. The Denny's own Denney deSigns of Acworth, Ga.

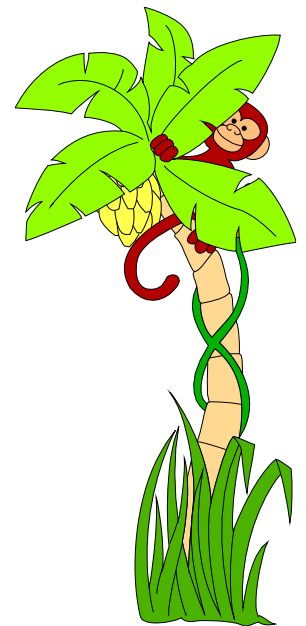
Sediment Trap Update

We are scheduled for the first sampling from our Sediment Trap on Saturday, July 19th. After the sampling, we are planning to have some fun in the sun on the sandbar. If you would like to take part, please contact Melissa Corbett at (772) 781-6408 or melissac@ewr1.com. She will be arranging the meeting place and coordinating boats / rides. ♦

2003 Golf Tournament Results

David Andre, P.E.
Treasure Coast Chapter Vice-President
Ardaman & Associates

Fun was had by all at the 17th Annual FES Golf Tournament recently held on June 28th at Eagle Marsh in Jensen Beach. We had 74 golfers participating in this year's tournament. Thank you to all of those who played and to those who participated via a sponsorship. Pictures taken during the tournament will be posted on our website shortly. ♦



Questions or Comments?

Board Meetings – All committee chairs are encouraged to attend. Members wishing to observe or participate are always welcome. If you have anything that you would like added to our agenda or the monthly newsletter, please email us at tcfes@yahoo.com ♦

Quote of the Month

Love your neighbor; yet dont pull down your hedge.
- Ben Franklin

2002 - 2003 Treasure Coast Chapter Board Members

Kelly Cranford, P.E., President (561)682-2515 kcranfor@sfwmd.gov
Melissa Corbett, P.E., President-Elect (772) 781-6408 melissac@ewr1.com
David Andre, P.E., Vice President (772) 878-0072 dandre@ardaman.com
Teri Andre, P.E., Treasurer (772) 219-4003 teri.andre@mscwinc.com
Richard Schoenborn, P.E., Secretary (772) 489-0066 rschoenborn@hazenandsawyer.com
John Donahue, P.E., State Director (772) 286-3883 John-D@lbfh.com
Lisa Wichser, P.E., Regional Vice President (772) 286-3883 Lisa-W@lbfh.com
Craig Dunkelberger, P.E., Past-President (772) 343-9787 craigd@detpsl.org



TREASURE COAST CHAPTER
Chartered 1987
FLORIDA ENGINEERING SOCIETY
Affiliated with
NATIONAL SOCIETY OF PROFESSIONAL ENGINEERS
P.O. BOX 8764, PORT ST. LUCIE, FL 34985

