

# BLACKLINES

A Monthly Newsletter for Members of the Florida Engineering Society

Volume 17, Issue 1

January 2003

## President's Message

Kelly Cranford, P.E.  
Treasure Coast Chapter President  
South Florida Water Management District

2002 was a very good year for our chapter. Our members continued to give back to the community in many ways; some by serving on local planning and code enforcement boards while others work with future engineers on a personal level. In the past, we have participated in permitting and construction of local Habitat for Humanity projects and built pavilions at local parks. We are currently working on the expansion of a local no-kill shelter (Dogs & Cats Forever) and are exploring more opportunities for community involvement.

Our chapter covers an area rich with natural resources and we are involved in efforts to protect and restore our rivers and estuaries. During one Engineer's Week activity, our members embarked on a mission to help restore the health of the St. Lucie River with an assault on the river's stormwater receiving devices. We have recently joined the River Coalition – a group of organizations working together to preserve and enhance local rivers – and hope that our involvement with this coalition leads the improved condition of our rivers.

We have just started our third year of involvement with the nationally sponsored high school pre-engineering program "Project Lead the Way" (PLTW). Last year, the PLTW program culminated at our May meeting where FES members helped to judge the 36 student projects that entailed the design of a recreational park from the geotechnical investigation to the placement of light fixtures. During the 2001-2002 school year, our members donated more than 350 hours of time to this project.

Our 16th Annual Golf Tournament raised enough money for us to award \$1,250 in scholarships to area high school students, spend \$3500 on MATHCOUNTS, and make a \$750 donation to Project Lead the Way for

*President's Message - continued*

the purchase of much needed equipment. Our 17<sup>th</sup> Annual Golf Tournament was even more successful and will allow us to give even more back to our community.

We are looking forward to becoming even more involved in our local area over the next year. If you have any suggestions for projects or opportunities for the Chapter, contact one of you board members or e-mail us at [tcfes@yahoo.com](mailto:tcfes@yahoo.com). ♦



## CALENDAR OF EVENTS

LEGISLATIVE FORUM

CLUB MED, PORT ST. LUCIE  
THURSDAY, JANUARY 30

ENGINEER'S WEEK BANQUET

CLUB MED, PORT ST. LUCIE  
FRIDAY, FEBRUARY 21ST

MATHCOUNTS, LOCAL COMPETITION  
IRCC SCIENCE AUDITORIUM, FT. PIERCE  
SATURDAY, FEBRUARY 8TH

## INSIDE THIS ISSUE

Upcoming Chapter Meetings

P.E. Refresher Course

MATHCOUNTS Committee Update

## Member News

Join us in welcoming the following new members to the Treasure Coast Chapter.

Stephen W. Boehning PE - Coastal Technology Corporation

E. Allen Bottorff II, EI - LBFH Inc.

Stacy A. Fowler , PE - City of Port St Lucie Utilities

Raymond M. Garcia , PE - LBFH Inc.

Medhat Hassan , PE - Dunkelberger Engineering & Testing

Rhett Keene , EI - Captec Engineering

Daimian Leslie , EI - Williams Hatfield & Stoner, Inc

Qiaohong Lu , EI - LBFH Inc.

Marcos Montes De Oca , EI - LBFH Inc.

Yezenia Ortiz - CREECH Engineers, Inc.

Patrick Pecunia - Culpepper & Terpening, Inc.

Tracy C. Robb , PE - Northern Palm Beach County

Chad O'Neal Rucks , EI - LBFH Inc.

Mark Van Heden , EI - Miller Sellen Conner & Walsh

David A.Wojcieszak , PE - Wojcieszak & Associates, Inc.



Although we were fortunate to gain so many new engineers during 2002, we still have room for many more.

In other news - Melissa Corbett, E.I., has joined Engineering and Water Resources, Inc. ♦

## Awards

The Treasure Coast nominee for the state Young Engineer of the Year is Melissa Corbett E.I. The announcement of our chapter's Young Engineer of the Year, Engineer of the Year, Scholarship Recipients, Membership Recruiter of the Year, and many other special awards will be at our Engineer's Week Banquet.

And the **FES Young Engineer of the Year is.... Melissa Corbett, E.I.** FES recently awarded Melissa as co-recipient of the Young Engineer award for 2003. Congratulation Melissa! ♦

## Chapter Web-site

Our new and improved web site is now up and running. It can be viewed at <http://old.fleng.org/treasurecoast/>.

**For Members Only** - If you would like a link to your company's web page added to our web site, please e-mail Teri Andre at [teri.andre@mscwinc.com](mailto:teri.andre@mscwinc.com) or call Mark Van Heden at (772)219-4003. <

## P.E. Exam Refresher Course

Richard Schoenborn, P.E.  
Treasure Coast Chapter Secretary  
Hazen and Sawyer, Inc.



We have now finalized the schedule for the PE Refresher Course. The fee is \$100 for FES Members, \$150 for Non Members \$150, which does not include books, notes, or previous exams. Registration forms are now available on our website at

[http://old.fleng.org/treasurecoast/PE\\_Course.htm](http://old.fleng.org/treasurecoast/PE_Course.htm).

February 18 - Distribution Hydraulics: Richard Schoenborn

February 20 - Open Channel Flow Hydraulics & Drainage: Pat Ferland

February 25 - Roadway Design: Kim Graham / Kelly Cranford

February 27 - Traffic Engineering: Open

March 4 - Structural Analysis: Bill Mathers

March 6 - Soils Engineering: Craig Dunkelberger

March 11 - Steel Design: Stiles Pete

March 13 - Concrete Structures Design: Jeff McKee

March 18 - Wastewater Engineering: Richard Schoenborn

March 20 - Water Engineering: Open

March 25 - Engineering Economics: John Donahue

For more information – or to volunteer to teach the Traffic Engineering or Water Engineering sessions - contact Rich Schoenborn at (772)489-0066 or [rschoenborn@hazenandsawyer.com](mailto:rschoenborn@hazenandsawyer.com) ♦

## Legislative Forum

David Andre, P.E.  
Treasure Coast Chapter Vice-President  
Ardaman & Associates

Our annual Legislative Forum will be held on January 30, 2003 at Club Med in Port St. Lucie. Local State Representatives and Senators will be available to meet in a casual, one-on-one atmosphere to discuss issues that affect our personal and professional lives in the Treasure Coast area. Our guests will be State Representative Joe Negron (District 82) and State Representative Gayle Harrell (District 81).



Please RSVP to David Andre at (772) 878-0072 or at [DAndre@ardaman.com](mailto:DAndre@ardaman.com) by January 24, 2002.

Directions to Club Med are on our web site at <http://old.fleng.org/treasurecoast/>.

# MATHCOUNTS Committee Update

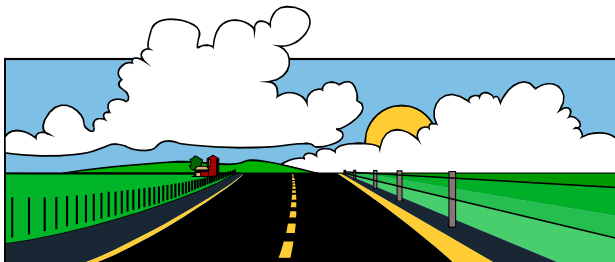
Kelly Cranford, P.E.  
Treasure Coast Chapter President  
South Florida Water Management District

This year our local committee has four co-chairs: Roxanne Chesser, P.E. (City of Port St. Lucie Engineering), Lisa Leonard, E.I. (CREECH Engineers, Inc.), Yezi Ortiz (CREECH Engineers, Inc), and myself. Thanks mostly to the hard work of Lisa and Yezi we have 10 schools with 61 students officially registered for this year's local competition, including for the first time in our chapter's history – a home school. We are anticipating another 30 unofficial student participants at the competition, which will bring the total number of mathletes to just over 100.

We are collecting prizes to award to the coaches and students. If you would like to contribute a gift certificate or other item (Did you receive a Christmas present that might be better appreciated by someone else?) please contact Lisa Leonard [leonard@creechinc.com](mailto:leonard@creechinc.com) or (772) 283-1413.

We still need volunteers for the actual competition. If you can participate at the registration desk, scoring room, or as a proctor, please contact Yezi Ortiz at [yortiz@creechinc.com](mailto:yortiz@creechinc.com).

We are also looking for a local celebrity to help with the awards ceremony. If you know any sports stars or other local celebrities who might be willing to donate a few hours of their time, please contact Lisa Leonard at [leonard@creechinc.com](mailto:leonard@creechinc.com) <



# Engineer's Week Banquet

Melissa Corbett, E.I.  
Treasure Coast Chapter President Elect  
Engineering and Water Resources, Inc.

Our E-Week banquet has been set for Friday, February 21st, at Club Med. Your invitation should be arriving soon - with all the details of this exciting evening. <



# Scholarships

Melissa Corbett, E.I.  
Treasure Coast Chapter President Elect  
Engineering and Water Resources, Inc.

We are currently in the process of reviewing the applications for our local scholarship(s). Anyone interested in volunteering for the scholarship committee, please contact Melissa Corbett at 781-6408 or [melissac@ewr1.com](mailto:melissac@ewr1.com). The scholarships will be presented at our Engineer's Week Banquet. ♦

# Quote of the Month

*Health nuts are going to feel stupid someday, lying in hospitals dying of nothing.*  
-Redd Foxx

# Questions or Comments?

If you have any questions or comments regarding the content of the Newsletter - or if you would like something included in the monthly publication - please feel free to contact Kelly Cranford, P.E. at [blue2990@earthlink.net](mailto:blue2990@earthlink.net), or by telephone at (772)485-1334.

Photographs are from our December 2002 Shrimp Boil.  
Courtesy of David Andre, P.E.



**2002 - 2003 Treasure Coast Chapter Board Members**

Kelly Cranford, P.E., President (561)682-2515

[kcranfor@sfwmd.gov](mailto:kcranfor@sfwmd.gov)

Melissa Corbett, E.I., President-Elect (772) 781-6408

[melissac@ewr1.com](mailto:melissac@ewr1.com)

David Andre, P.E., Vice President (772) 337-1200

[dandre@ardaman.com](mailto:dandre@ardaman.com)

Teri Andre, P.E., Treasurer (772) 219-4003

[teri.andre@mscwinc.com](mailto:teri.andre@mscwinc.com)

Richard Schoenborn, P.E., Secretary (772) 489-0066

[rschoenborn@hazenandsawyer.com](mailto:rschoenborn@hazenandsawyer.com)

John Donahue, P.E., State Director (772) 286-3883

[John-D@lbfh.com](mailto:John-D@lbfh.com)

Lisa Wichser, P.E., Regional Vice President (772) 286-3883

[Lisa-W@lbfh.com](mailto:Lisa-W@lbfh.com)

Craig Dunkelberger, P.E., Past-President (772) 343-9787

[craigd@detpsl.org](mailto:craigd@detpsl.org)