



# BLACKLINES

*A Monthly Newsletter for Members of the  
Treasure Coast Chapter of the Florida Engineering Society*

Volume 21, Issue 3

August, 2006

## PRESIDENT'S MESSAGE

**Marcos Montes De Oca, P.E.**

I'm El Presidente - finally...what can I say, I've been lucky enough or foolish enough to inherit this position and its responsibilities. In all honesty, I am excited to be able to work with a familiar and energetic board to accomplish more than ever this year. Chad has set the stage for a smooth year, which leaves only me to mess things up.

I look forward to changing as little as possible—nobody likes change—however, as engineers, Change of Scopes occur. I have included the Five Change of Scope items to make it easier for you as a member to be active in this chapter:

- (1) Mark your calendars, Meetings will be held the 3rd Thursday's of each month at FINZ Waterfront Grille - (Pending Hurricanes or other Acts of God)
- (2) Be ready to be asked questions and give feedback on each month's topics and/or club activity.
- (3) Be ready to eat at chapter meetings, let's face it, what's dinner without food
- (4) Be ready to be asked to get involved and finally
- (5) HAVE FUN!!

And with the Change of Scopes, I have also included the Scope of Services broken down into phases that we as a board will provide;

**Phase (1)** An exciting and informative topic at each chapter meeting with food. This phase will be billed in a monthly **Lump Sum Basis, typically \$35 - \$40 per meeting.**

**Phase (2)** LISTEN to your concerns and ideas. As members, you have a voice.

**Phase (3)** Provide you the opportunity to get involved with your fellow officers and members in projects.

**Phase (4)** Update the website in a timely manner.

*Phases (2), (3) and (4) will be billed on a Time and Expense Basis of \$ FREE .00*

**Phase (5)** Provide a Professional Society and Atmosphere to advance all types of Engineering in Florida.

***What the heck, if you show up at the meetings and work with our chapter we'll even throw in Phase (5) at no charge....How can you members not agree to this!!***

I have made a pledge to this chapter to continue its high standards, and if at any point you as a member feel that I we as a board are not achieving the goals presented, please contact me at (863) 763-8999 or marcos-m@lbfh.com

Thank you again for taking the time to read this month's thoughts.

Marcos - El Presidente - Treasure Coast Chapter of FES

### *August Meeting at a Glance...*

**Who:** TBA

**What:** TBA

**Where:** Finz Waterfront Grille

**When:** August 17, 2006

**Cost:** TBA

**RSVP:** Heidi Henderson by August 14th at [HHenderson@Creechinc.com](mailto:HHenderson@Creechinc.com) or by calling (772) 283-1413.

# Meet Your Newest Chapter Officers

## **Marcos Montes De Oca, P.E.— President**

Master of Engineering Degree the University of Florida  
Grew up in Moore Haven, and now lives in Okeechobee (the town)

Has worked for LBFH since 2001.

Hobbies include playing at the ranch, working on the house and participating in worthwhile projects.

## **Heidi Henderson, E.I.— Vice President**

Bachelor of Science in Civil Engineering from Florida State University

Born and raised in Tallahassee.

Has worked for Creech Engineers for the last 3 years

Hobbies—workout, swim, dance

## **Will Cornelius, E.I.— Treasurer**

Bachelor of Science in Civil Engineering from the University of Central Florida

Master of Science in Civil Engineering from the University of Central Florida

Born & raised in Winter Park, Florida

Has worked for Ardaman & Associates, Inc. for the last 2 years

Hobbies include baseball, football, macramé and “gator wrasslin”

## **Jon Murray, E.I.— Secretary**

Bachelor of Science in Civil Engineering from the University of Missouri—Rolla

Born in Bangkok, Thailand, but now calls South Florida home.

Has worked for LBFH for the last year.

Hobbies include inline hockey, diving, and bowling.

## **TREASURE COAST CHAPTER COMMITTEE OPPORTUNITIES**

**We still need volunteers** for many State Committees. Below is a list of the committees that are available. For details on a specific committee and an explanation of responsibilities, please see the FES website (<http://www.fleng.org/aboutfes.cfm>). If you are interested in volunteering for any of these committees, please contact Marcos Montes De Oca at 863-763-8999 or [marcos-ml@lbfh.com](mailto:marcos-ml@lbfh.com).

### **Energy Committee**

Study and make recommendations to the Commission on Legislative and Government Relations of the Florida Engineering Society with respect to energy matters affecting the public and the profession. Prepare studies and make recommendations to the Commission on energy policies or positions that would be appropriate for the Society to adopt and promote.

### **Communications Advisory Committee**

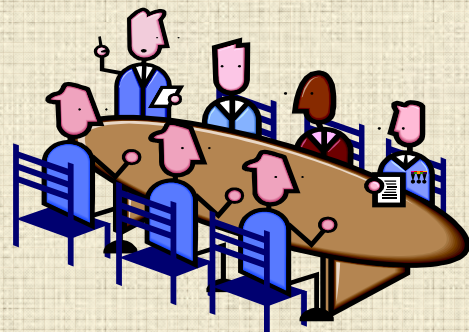
The objectives of this committee shall be to focus on opportunities for FES to improve its internal and external public relations efforts through effective use of communications.

### **Charter and Bylaws Committee**

Maintain a continuing study of the Society's Charter and Bylaws and make recommendations to the Board for revisions. Review proposed amendments to the Charter and Bylaws and make recommendations to the Board on the manner in which they shall be incorporated in the wordage of the Charter and Bylaws.

### **Commission on Legislative & Government**

The purpose of the commission is to provide the Florida Engineering Society with maximum participation in and proper coordination of its legislative and government relations program.





# A Call for Support!



Project Lead-the-Way is now going strong at the new Jensen Beach High School. Headed by FES member Rick Creech, P.E. and local engineer Steve Cargill, the engineering community and JBHS representatives have created a dynamic, exciting pre-engineering program for our local students.

We are presently seeking internship positions for the junior and senior level students for the upcoming fall and spring semesters. If your firm is able to provide such a position to one of these aspiring engineers, please contact David Andre, P.E. at (772) 807-9191 or through email at [dandre@aceinc.com](mailto:dandre@aceinc.com). If you are interested in becoming involved in the Pre Engineering Business Involvement Board, please contact Mary Correia at Creech Engineers, Inc. at (772) 283-1413 or via email at [mcorreia@creechinc.com](mailto:mcorreia@creechinc.com).

*Project Lead The Way® (PLTW) is a not-for-profit organization that promotes pre-engineering courses for middle and high school students. PLTW forms partnerships with public schools, higher education institutions and the private sector to increase the quantity and quality of engineers and engineering technologists graduating from our educational system. Please visit <http://www.pltw.org/aindex.htm> for more information.*

## MEMBERSHIP SPECIAL

Any new member that joins in August receives 14 months of membership for the price of 12. FES only offers this special once a year. This is a great opportunity for to become active and participate in FES. Membership applications are available on-line at [www.fleng.org](http://www.fleng.org) or contact the Member Services Department at 850-224-7121

*The FES Treasure Coast Chapter Website has been updated!!*

Please visit <http://old.fleng.org/treasurecoast/> for Chapter news and information, photos from previous Chapter events, and the “Member’s Ride of the Month”. Please contact Marcos Montes De Oca, PE at [Marcos-M@lbfh.com](mailto:Marcos-M@lbfh.com) to contribute to our website.

# CONTINUING EDUCATION NEWS



## **CIVIL PE REVIEW COURSE ...WITH A GUARANTEE**

September 8-10

September 29-October 1

Renaissance Orlando Hotel – Airport

Take the two-weekend-long course offered by FES, meet the course completion requirements, and you have our guarantee. If you don't pass the exam, you may repeat the course for up to one year after your initial enrollment at no additional charge. What are the course completion requirements? You must attend 80% of the course and complete 80% of the assignments including a sample exam.

Our instructors combine knowledge of engineering principles, professional experience, and problem-solving abilities with practical insights into the exams. Homework assignments, practice exams, and instructor handouts will develop and reinforce critical test-taking skills. Through a partnership with Professional Publications, Inc. FES can offer a discount on PPI study materials.

Brochure and on-line registration are available on our Web site [www.fleng.org](http://www.fleng.org)

**Until August 18<sup>th</sup>**

\$695

**After August 18<sup>th</sup>**

\$795



# CLASSIFIEDS



## Project Engineers & Project Managers

**LBFH, Inc.** leverages the skills and experience of all employees and offers an environment that fosters individual growth and rewards performance. You'll be working for an award-winning company with an impressive track record. This is an amazing opportunity to join LBFH, Inc. and gain experience as a Project Engineer, Team Leader or Project Manager.

### Qualifications:

- Minimum of 6+ years progressive civil engineering experience in Land Development, Water Resources or Water and Wastewater.
- BS or Master's degree in engineering from an A.B.E.T accredited college or university.
- Professional Engineering License required (preferably registered in Florida).
- 3+ years experience supervising/managing a team of engineers and techs (for Team Lead and Project Manager positions).

Demonstrated successful performance in dealing with all levels and internal and external business clients.

LBFH, Inc. provides Civil Engineering, Survey/Mapping & GIS services to private and government clients. Our corporate office is located in Palm City, Florida with branch offices in West Palm Beach, Ft. Pierce, Okeechobee, Ft. Myers and Or-



### Responsibilities include:

Design, permitting and production of civil engineering plans and construction documents as well as close coordination with client representatives.

Supervision of CAD technicians and EIT's

### Position Requirements:

Excellent communication and organizational skills. PE is not required but candidates must be eligible for Florida registration.

### Benefits:

Group health and dental insurance. Company-paid life insurance, short and long term disability insurance plan.

401(k) retirement plan with employer match.

Salary commensurate with experience.

Tuition Reimbursement Program.

Continuous professional learning environment.

Join our award-winning team and great work environment with career advancement opportunities.

### Resumes:

Please email to [hr@creechinc.com](mailto:hr@creechinc.com) or Fax: (772) 283-8104. For a confidential interview, please contact Mary Correia at (772) 283-1413. Please visit our website at [www.creechinc.com](http://www.creechinc.com) for more positions available



# CLASSIFIEDS



Our dynamic team is seeking exceptionally talented candidates for the following positions in our St. Lucie office:

**ENGINEER III**

**Civil engineer with FL PE needed w/ land development design exp to manage projects and build client base in St Lucie. Familiarity w/ local agencies desired.**

**ENGINEER I**

**1+ years experience with land dev & government design projects. AutoCAD a must.**

**TRAFFIC ENGINEER I**

**0-2 yrs transportation engineering exp w/ signal design , traffic impact studies, parking utilization etc. AutoCAD and/or Microstation desirable.**

**Miller Legg**, is celebrating 40 years of providing outstanding professional services in Florida and our dynamic company is always looking for energetic professionals to join our Team.

Visit [www.millerlegg.com](http://www.millerlegg.com) to learn more about our St. Lucie, Orlando, Pembroke Pines, Ft. Lauderdale & West Palm Beach offices.

Please forward your résumé to:

**Miller Legg**

Attn: Human Resources  
749 SE Port St. Lucie Blvd.  
Port St. Lucie, 34984

**Email:**HR@millerlegg.com  
**Fax:** 407-629-7883



Leading National Consulting Firm expanding land development operations in West Palm Beach, Port St. Lucie, and Vero. Positions available:

- Survey Party Chiefs
- Survey Instrument
- Survey and Engineering CADD Technicians
- Entry Level Engineering Graduates
- Project Engineers and Designers
- Project Managers

Fax Résumé to Arcadis:  
West Palm Beach – (561) 684-1812  
Port St. Lucie & Vero – (772) 878-1802  
EOE Employer



# CLASSIFIEDS

**We believe.**  
A pencil in the right person's hand  
can make the world a better place to live.

**MSCW**  
www.MSCWinc.com  
Orlando Headquarters  
817 472 9188

At MSCW we are a team of talented individuals with diverse skills. We are a group of professionals with unique visions but common goals. And we are looking for other individuals to join our team – people with vision, people with passion, people who want to help us change the world we live in.

We are currently seeking to fill multiple openings in our Stuart office, including the positions of staff and project engineers, project managers and all levels of planner/designers. MSCW offers a generous compensation and benefits package, including health, dental, vision, life and disability coverage, 401(k) retirement benefits and ample paid time off.

To learn more about current openings at MSCW – formerly Miller Sellen Corner & Walsh – visit our new website at [www.MSCWinc.com](http://www.MSCWinc.com).

Civil Engineer needed with experience in design and preparation of land development projects and surface water management design and permitting. BSCE with PE or ability to obtain within 1 year preferred. Salary commensurate with experience and qualifications.

This position is with a growing Engineering Firm with offices in Fort Pierce and Okeechobee, FL.

Interested parties, please forward resumes to:

Shanda Walker  
210 NW Park Street, Suite 204  
Okeechobee, FL 34974  
Phone: 863-467-0076  
Fax: 863-467-0091





# CLASSIFIEDS



## Engineering & Water Resources, Inc.

7881 SW Ellipse Way, Stuart, Florida 34997 • 772-781-6408 • Fax: 772-781-6409 •  
[www.ewr1.com](http://www.ewr1.com)

Engineering & Water Resources, Inc. (EWR) currently has the following openings:

Professional Engineer with strong land development design and permitting background

Graduate Engineer with a BS or Master's degree in engineering from an A.B.E.T accredited college or university, preferably with an E.I. classification

Agricultural Engineer with experience in agricultural nutrient management plans and storm water management systems.

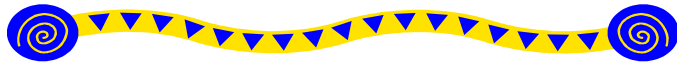
EWR is a young, aggressive and growing multidisciplinary consulting firm (visit our web site at [ewr1.com](http://ewr1.com)). We provide an excellent benefit program, including full family medical paid by the company, life insurance, cafeteria plan, 401K, paid time off, and competitive compensation. Send your resume to Melissa Corbett, P.E. at [melissac@ewr1.com](mailto:melissac@ewr1.com) or fax to 772-781-6409.



# Classifieds



Did you know that the Treasure Coast Chapter will publish POSITIONS WANTED and HELP WANTED notices for its members at no cost?! Please email your advertisements to Jon Murray, E.I. at [Jon-M@LBFH.com](mailto:Jon-M@LBFH.com)



## Quote of the Month

“Engineering is a great profession. There is the satisfaction of watching a figment of the imagination emerge through the aid of science to a plan on paper. Then it moves to realisation in stone or metal or energy. Then it brings homes to men or women. Then it elevates the standard of living and adds to the comforts of life. This is the engineer's high privilege..”

Herbert Hoover (1874 - 1964)



**For Members Only** - If you would like a link to your company's web page added to our web site, please e-mail Jon Murray, E.I. at [Jon-M@LBFH.com](mailto:Jon-M@LBFH.com) or call (772) 286-3883.

# Membership News

## Are you getting back for giving back to FES?

This year reward yourself with FREE incentive prizes from FES. Each time you give back to FES through a new member sponsorship, you will receive a prize. Prizes vary from FES Bucks (to use like cash at FES events), to free membership dues at the state and national level, to a top prize of a two night stay at the Marco Island Marriott. A complete list of membership incentive prizes is available at [www.fleng.org](http://www.fleng.org) along with the FES membership application. For additional information about sponsoring new members, contact Kate Robinson Ray, Director of Membership Recruitment at 850-224-7121 or [KRay@fleng.org](mailto:KRay@fleng.org).

## Questions or Comments?

If you have any questions/comments, or if you would like something included in the monthly publication, please feel free to contact Jon Murray, E.I. at [Jon-M@LBFH.com](mailto:Jon-M@LBFH.com) or by telephone at (772) 286-3883

### 2005 - 2006 Treasure Coast Chapter Board Members

- Marcos Montes De Oca, P.E., President (863) 763-8999 [Marcos-M@LBFH.com](mailto:Marcos-M@LBFH.com)
- Heidi Henderson, E.I., Vice President (772) 283-1413 [HHenderson@Creechinc.com](mailto:HHenderson@Creechinc.com)
- Will Cornelius, E.I., Treasurer (772) 878-0072 [WCornelius@Ardaman.com](mailto:WCornelius@Ardaman.com)
- Jonathan Murray, E.I., Secretary (772) 286-3883 [Jon-M@LBFH.com](mailto:Jon-M@LBFH.com)
- John Donahue, P.E., Regional Vice President (772) 461-2450 [John-D@LBFH.com](mailto:John-D@LBFH.com)
- Chad Rucks, P.E., Past-President (863) 763-8999 [Chad-R@LBFH.com](mailto:Chad-R@LBFH.com)
- Patrick J. Ferland, P.E., State Director (772) 878-1700 [Pferland@arcadis-us.com](mailto:Pferland@arcadis-us.com)

### TREASURE COAST CHAPTER

Chartered 1987

### FLORIDA ENGINEERING SOCIETY

Affiliated with

NATIONAL SOCIETY OF PROFESSIONAL ENGINEERS

P.O. BOX 8764, PORT ST. LUCIE, FL 34985

